

CITY OF PAHOKEE

CONTRACT PLANS

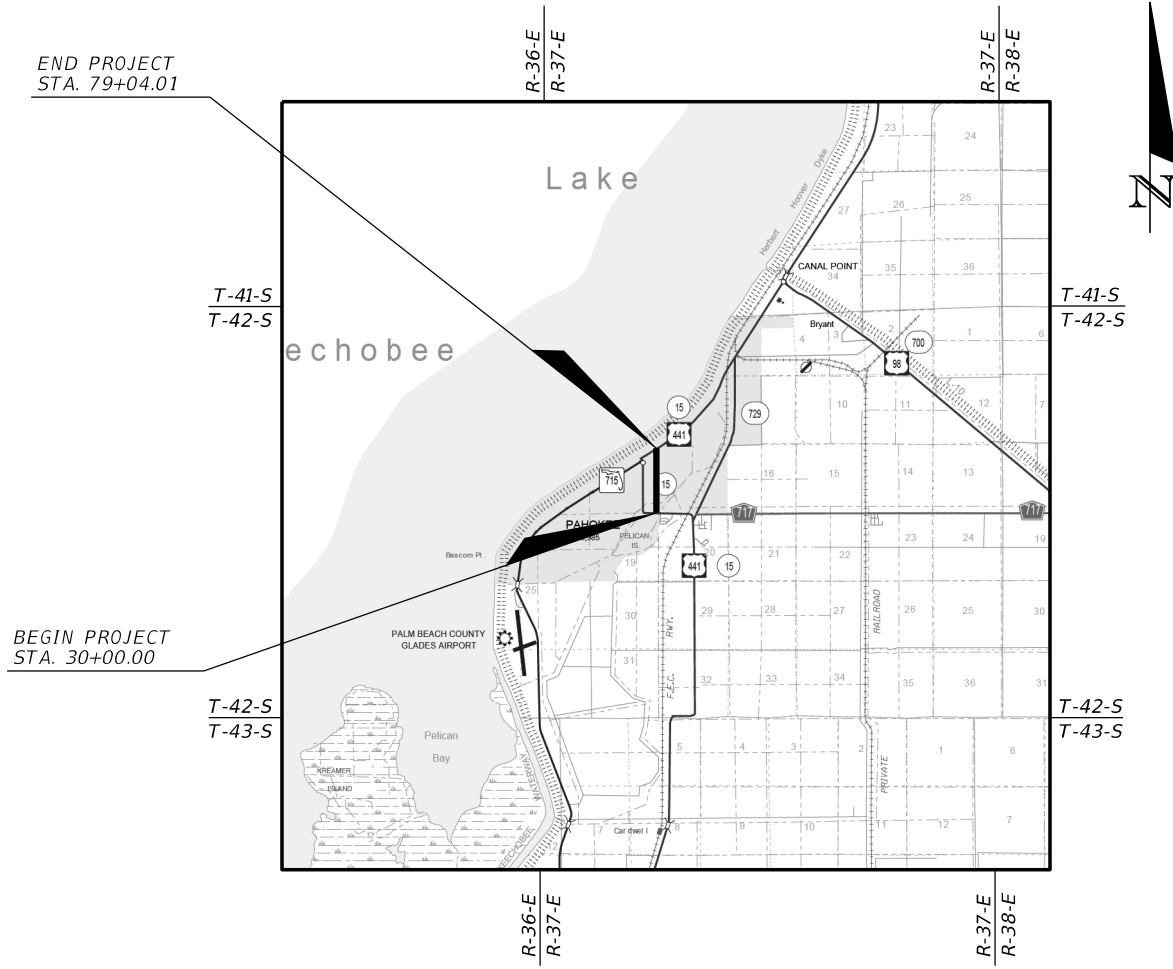
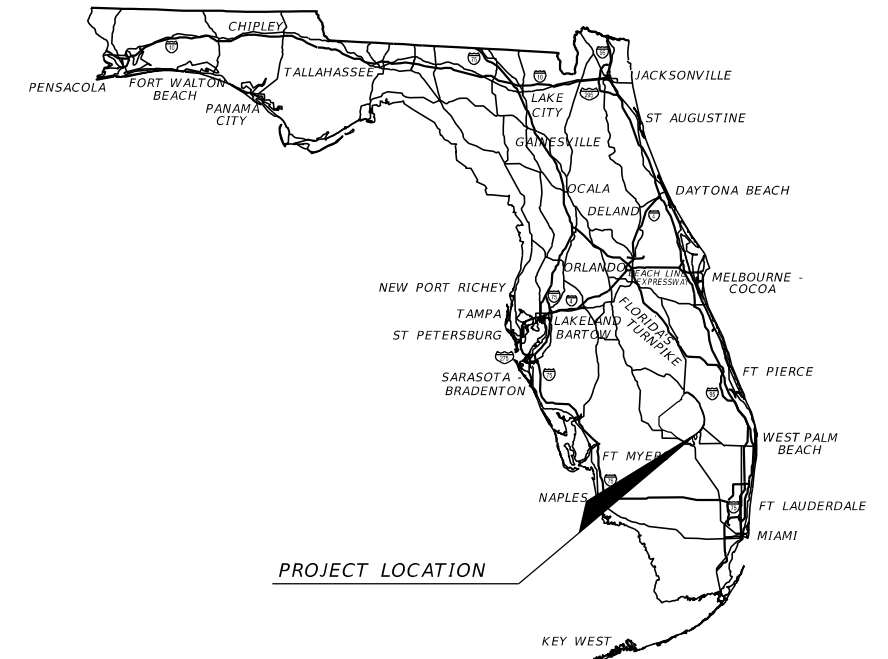
FINANCIAL PROJECT ID 442030-1-54-01

PALM BEACH COUNTY

BARFIELD HIGHWAY - WATER MAIN REPLACEMENT

INDEX OF ROADWAY PLANS

SHEET NO.	SHEET DESCRIPTION
W-01	KEY SHEET
W-02 - W-03	TYPICAL SECTION
W-04	GENERAL NOTES
W-05 - W-09	WUD STANDARD DETAILS
W-10 - W-18	PLAN - PROFILE SHEETS



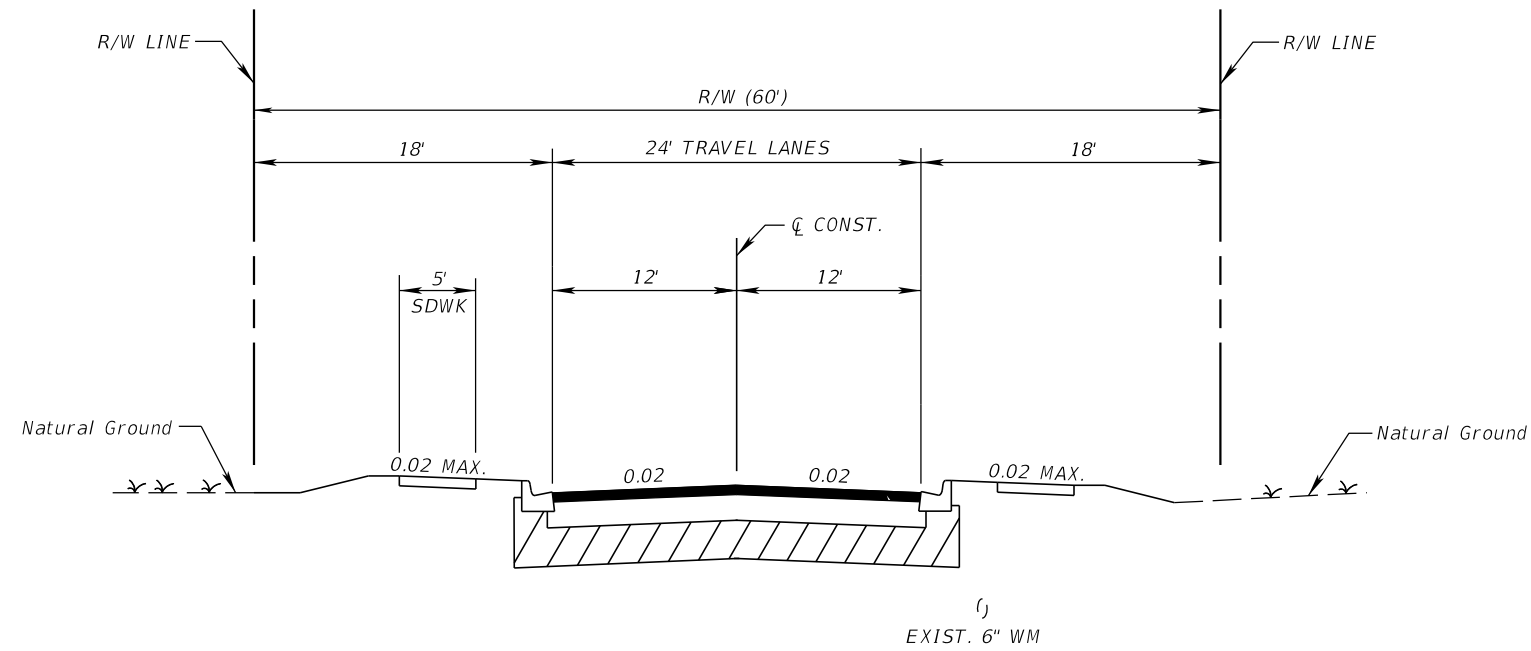
ROADWAY PLANS
ENGINEER OF RECORD:

RODERICK MYRICK, P.E. NO.: 56969
AE ENGINEERING, INC.
219 N. NEWNAN ST., 4TH FLOOR
JACKSONVILLE, FL 32202
CERTIFICATE OF AUTHORIZATION: 27212

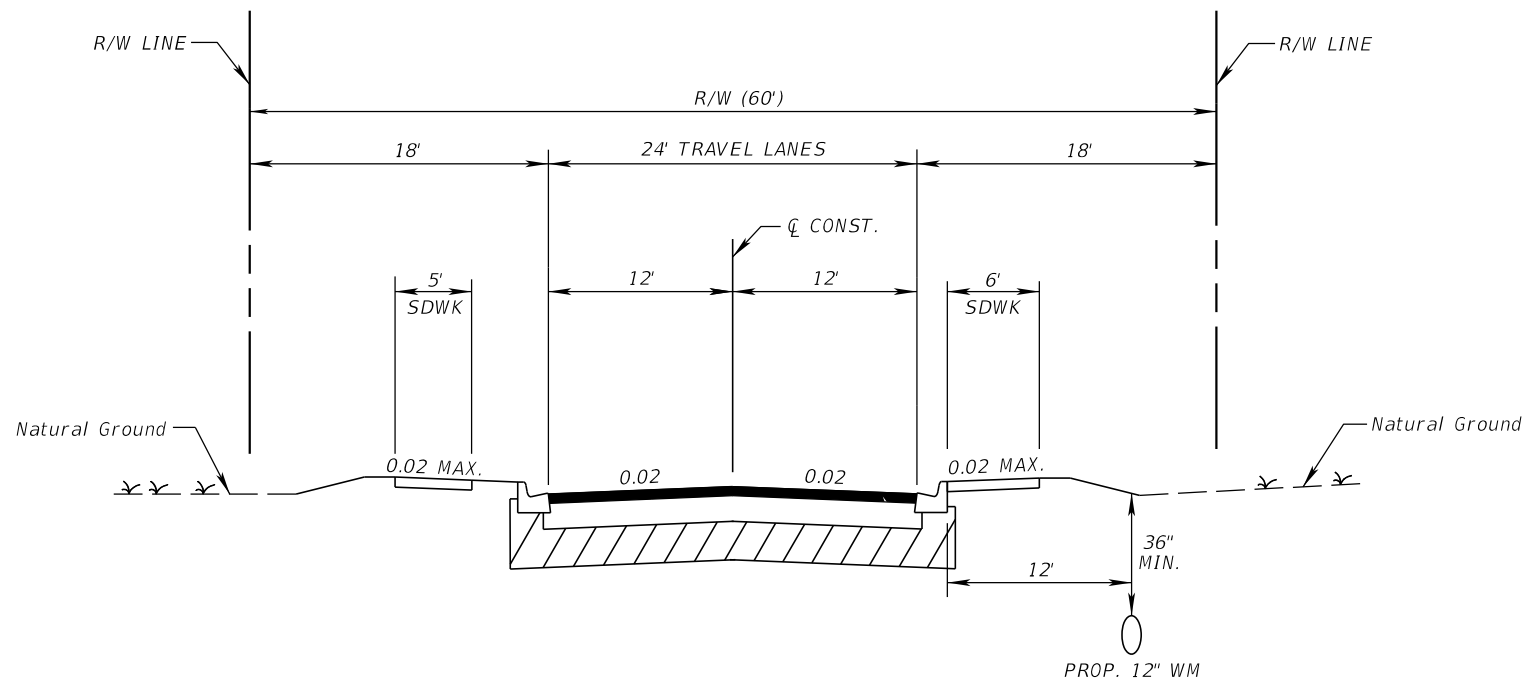
FINAL SUBMITTAL
NOVEMBER 2020

GOVERNING STANDARDS AND SPECIFICATIONS:
The Palm Beach County Water Utilities Department's "Minimum Design And Construction Standards for Potable Water, Reclaimed Water And Wastewater Systems" Effective The Date Of Plan Approval By Palm Beach County Water Utilities Department And Special Provisions Thereto If Noted in the Contract Specifications For This Project.

FISCAL YEAR	SHEET NO.
20	W-01



TYPICAL SECTION 1
S. BARFIELD HIGHWAY
STA. 30+00.00 TO STA. 38+12.85



TYPICAL SECTION 2
S. BARFIELD HIGHWAY
STA. 38+12.85 TO STA. 49+80.00

REVISIONS			
DATE	DESCRIPTION	DATE	DESCRIPTION

RODERICK MYRICK, P.E.
P.E. LICENSE NUMBER 56969
AE ENGINEERING, INC.
219 N. NEWNAN STREET, 4TH FLOOR
JACKSONVILLE, FL - 32202
CERTIFICATE OF AUTHORIZATION: 27212

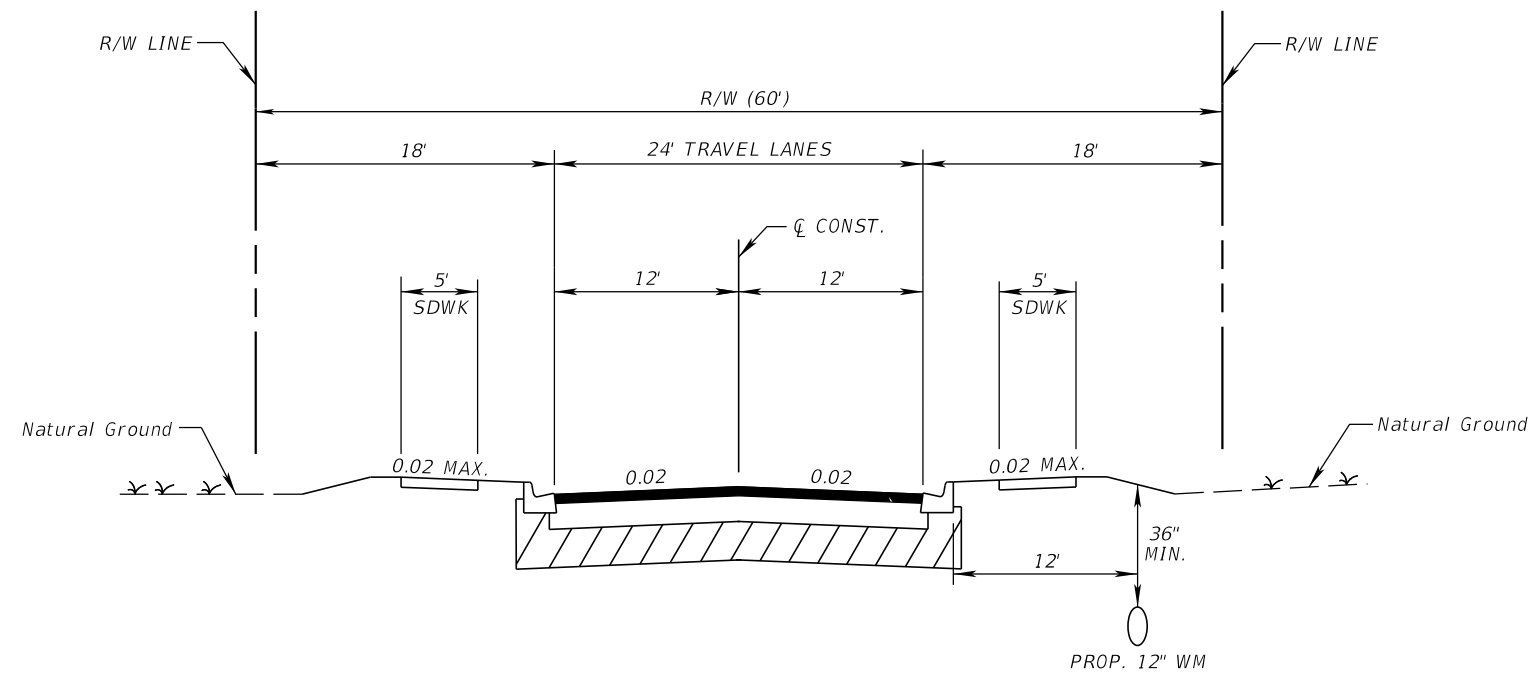
CITY OF PAHOKEE

ROAD NO.	COUNTY	FINANCIAL PROJECT ID
	PALM BEACH	442030-1-54-01

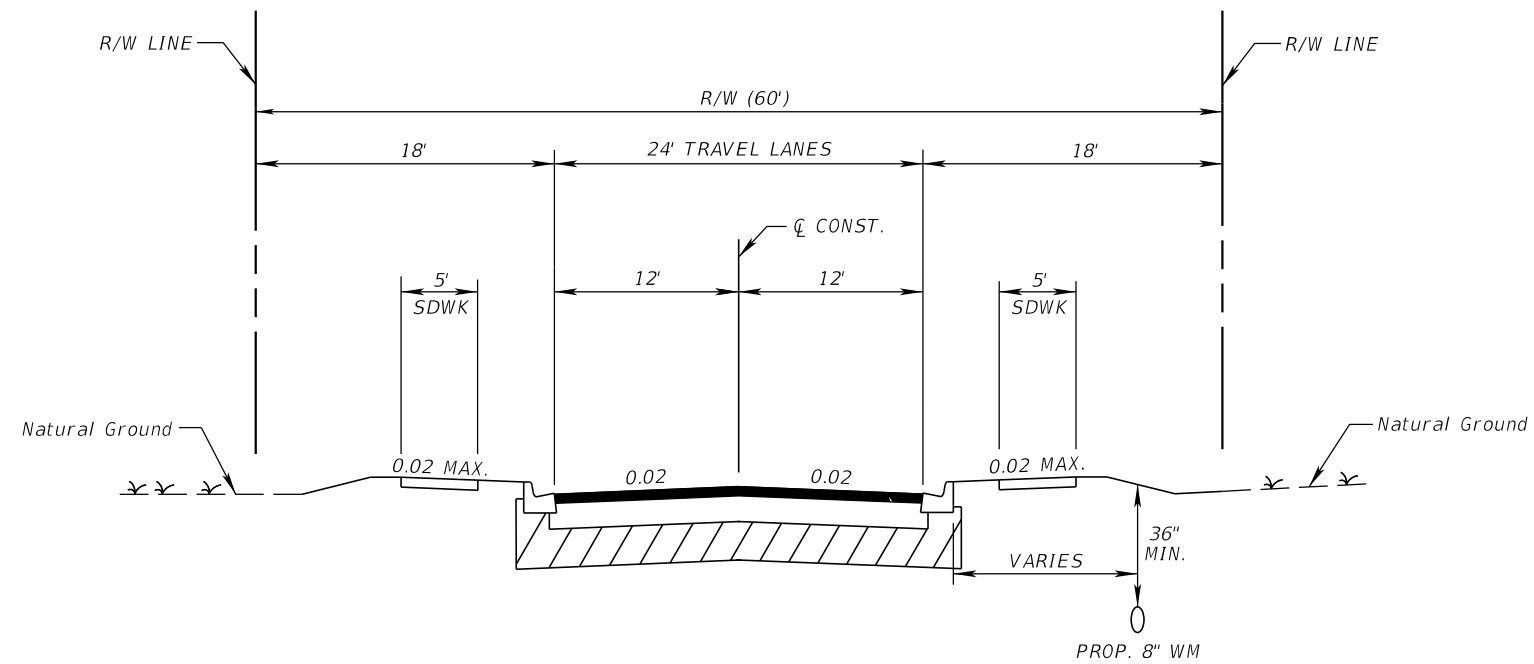
TYPICAL SECTION

SHEET NO.

W-02



TYPICAL SECTION 3
S. BARFIELD HIGHWAY
STA. 49+80.00 TO STA. 76+10.00



TYPICAL SECTION 4
S. BARFIELD HIGHWAY
STA. 76+10.00 TO STA. 78+45.10

REVISIONS			
DATE	DESCRIPTION	DATE	DESCRIPTION

RODERICK MYRICK, P.E.
P.E. LICENSE NUMBER 56969
AE ENGINEERING, INC.
219 N. NEWNAN STREET, 4TH FLOOR
JACKSONVILLE, FL - 32202
CERTIFICATE OF AUTHORIZATION: 27212

CITY OF PAHOKEE		
ROAD NO.	COUNTY	FINANCIAL PROJECT ID
	PALM BEACH	442030-1-54-01

TYPICAL SECTION	SHEET NO.
	W-03

THE OFFICIAL RECORD OF THIS SHEET IS THE ELECTRONIC FILE DIGITALLY SIGNED AND SEALED UNDER RULE 61G15-23.004, F.A.C.

GENERAL NOTES

1. BENCHMARK ELEVATIONS SHOWN ON THE PLANS ARE NORTH AMERICAN VERTICAL DATUM OF 1988 (NAVD 88).
2. THE LOCATION(S) OF THE UTILITIES SHOWN IN THE PLANS (INCLUDING THOSE DESIGNATED Vv, Vh, AND Vvh) ARE BASED ON LIMITED INVESTIGATION TECHNIQUES AND SHOULD BE CONSIDERED APPROXIMATE ONLY. THE VERIFIED LOCATIONS/ELEVATIONS APPLY ONLY AT THE POINTS SHOWN. INTERPOLATIONS BETWEEN THESE POINTS HAVE NOT BEEN VERIFIED.
3. UTILITY/AGENCY OWNERS:

COMPANY	CONTACT	TELEPHONE NUMBERS
COMCAST-PBG	ANTHONY SPRINGSTEEL	(772) 321-3425
FLORIDA POWER & LIGHT - PALM BEACH	LYN SMITH	(561) 904-3754
PALM BEACH COUNTY WATER UTILITIES	JACKIE MICHELS	(561) 493-6116
PALM BEACH COUNTY TRAFFIC OPERATIONS	ROD FRIEDEL	(561) 681-4371
AT&T DISTRIBUTION	GARTH BEDWARD	(561) 540-9263
4. ALL EXISTING UTILITIES WITHIN THE PROJECT LIMITS ARE TO REMAIN UNLESS OTHERWISE NOTED ON THE PLANS.
5. ALL VALVES SHALL HAVE MECHANICAL JOINT OR FLANGED ENDS AND BE RESILIENT SEAT DESIGN WITH RIGHT HAND CLOSED OPERATION.
6. ALL BENDS, TEES, CROSSES, REDUCERS, VALVES AND DEAD ENDS SHALL BE RESTRAINED THROUGH AN APPROVED MEANS OF MECHANICAL OR APPROVED FLEXIBLE JOINT RESTRAINT.
7. BLUE RPM'S TO BE INSTALLED AT THE FIRE HYDRANTS.

LEGEND PROPOSED

- = PROPOSED WATER SERVICE WITH CASING & METER BOX
- = WATER MAIN
- = WM GATE/BUTTERFLY VALVE
- = FIRE HYDRANT
- = WM TEE
- = WM BEND
- = WM REDUCER
- = WM VERTICAL DEFLECTION WITH 2 BENDS
- = SANITARY MANHOLE
- = ADDRESS

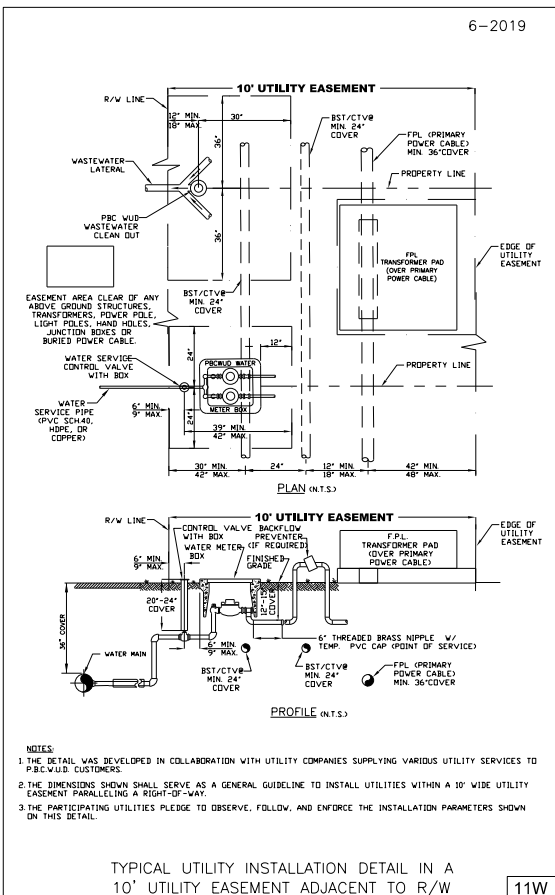
LEGEND EXISTING

- = WATER METER
- = WATER VALVE
- = FIRE HYDRANT
- = BACK FLOW PREVENTER
- = SANITARY CLEAN OUT
- = SANITARY MANHOLE
- = SANITARY SEWER VALVE
- = STORM CATCH BASIN
- = STORM MANHOLE
- = WATER MAIN
- = GRAVITY SANITARY
- = SANITARY FORCE MAIN
- = STORM DRAINAGE
- = BURIED FPL
- = OVERHEAD UTILITIES
- = BURIED FIBER OPTIC
- = BURIED IRRIGATION
- = BURIED ATT
- = BURIED COMCAST
- = RIGHT OF WAY
- = PROPERTY LINE
- = EASEMENT LINE
- = MAIL BOX
- = SIGN
- = WOOD LIGHT POLE
- = WOOD UTILITY POLE
- = CABLE TELEVISION RISER
- = TELEPHONE SPLICE BOX
- = TELEPHONE RISER
- = TELEPHONE MANHOLE
- = ELECTRIC HAND POLE*
*(UTILITY VARIES IE TRAFFIC/STREET LIGHT)
- = CONCRETE TRAFFIC SIGNAL
- = ELECTRIC METER PANEL
- = TRAFFIC SIGNAL SPLICE BOX
- = IRRIGATION CONTROL VALVE BOX
- U.E. = UTILITY EASEMENT
- D.E. = DRAINAGE EASEMENT
- W.M.T. = WATER MANAGEMENT TRACT
- B.A. = BUFFER AREA

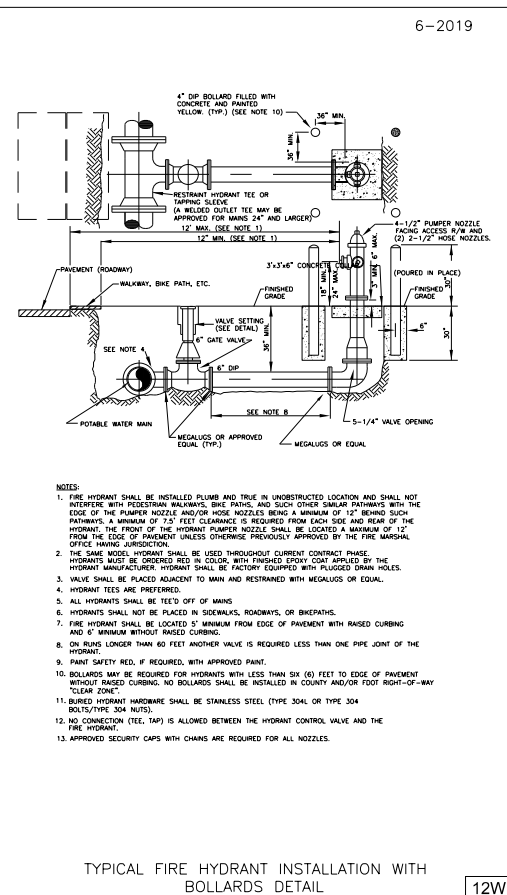
TREE LEGEND

NORFOLK PINE	FISHTAIL PALM	ARECA PALM	TAMARIND
MAPLE	HONG KONG ORCHID	ROEBELENI PALM	BOUGANVILLEA FL
ACACIA	SCHEFFLERA	CHRISTMAS PALM	JUNIPER
LAUREL OAK	MANGO	FOXTAIL PALM	FRANGIIPANI
TABEBUIA	GUMBO LIMBO	UNKNOWN	BISCHOFIA
BLACK OLIVE	CABBAGE PALM	BOTTLE BRUSH	HOLLY
LIVE OAK	AVOCADO	CARROT WOOD	BAYONETTE
ROYAL POINCIANA	HIBISCUS	SHRUB	CACTUS
FICUS	MAHOGANY	MAGNOLIA	DATE PALM
QUEEN PALM	WASHINGTONIAN PALM	PONYTAIL PALM	
	COCONUT PALM	CORN PLANT	

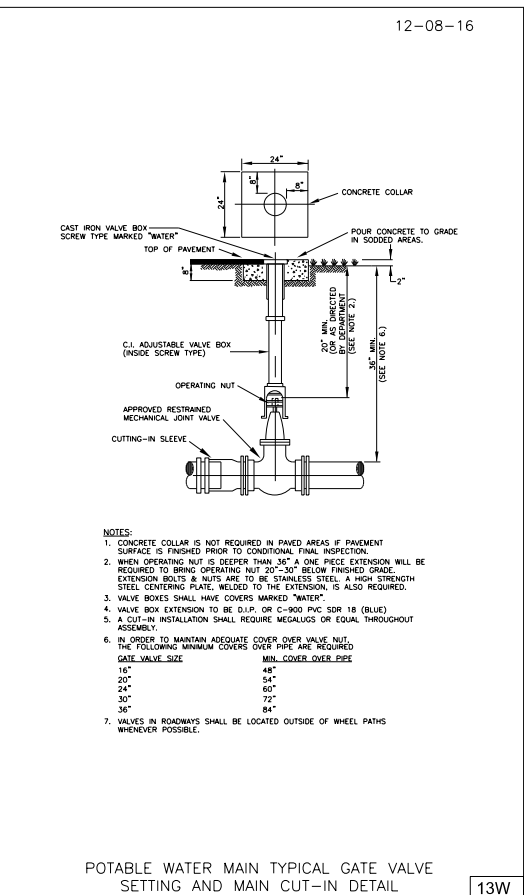
REVISIONS				RODERICK MYRICK, P.E. P.E. LICENSE NUMBER 56969 AE ENGINEERING, INC. 219 N. NEWNAN STREET, 4TH FLOOR JACKSONVILLE, FL - 32202 CERTIFICATE OF AUTHORIZATION: 27212	CITY OF PAHOKEE			GENERAL NOTES	SHEET NO.
DATE	DESCRIPTION	DATE	DESCRIPTION		ROAD NO.	COUNTY	FINANCIAL PROJECT ID		W-04
					PALM BEACH	442030-1-54-01			



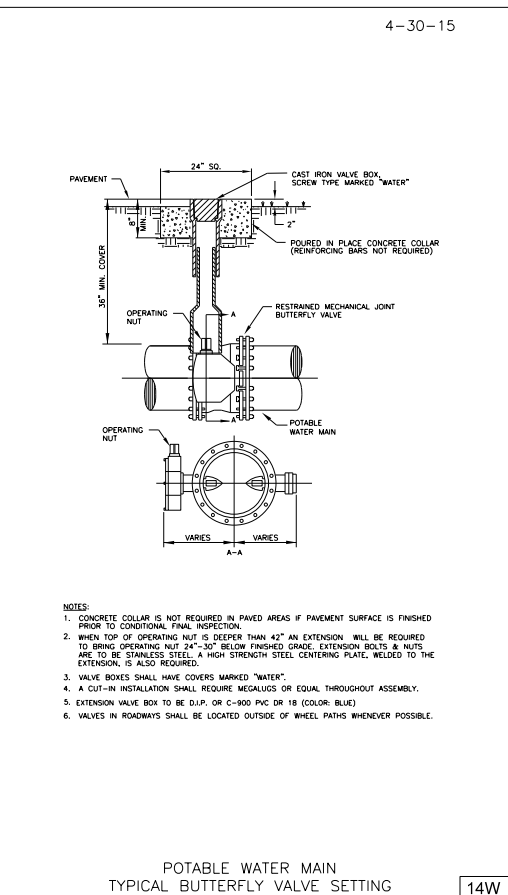
TYPICAL UTILITY INSTALLATION DETAIL IN A 10' UTILITY EASEMENT ADJACENT TO R/W 11W



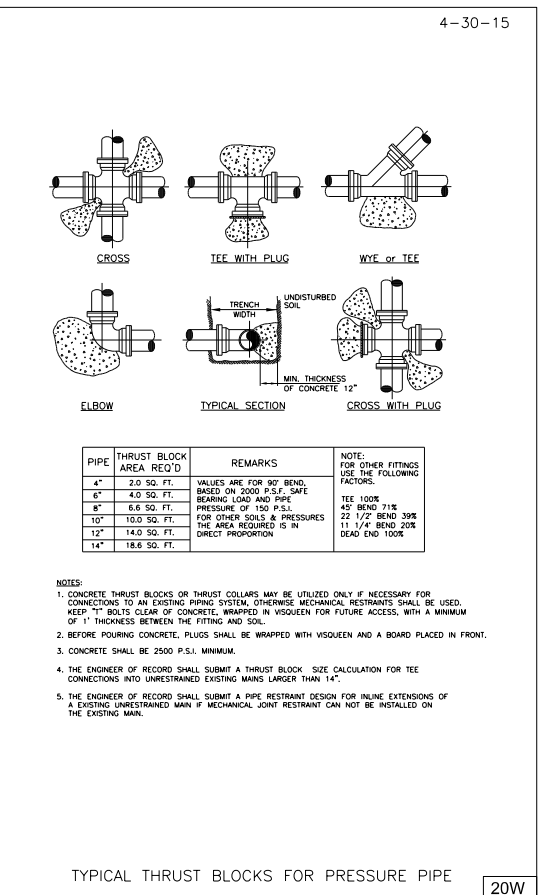
TYPICAL FIRE HYDRANT INSTALLATION WITH BOLLARDS DETAIL 12W



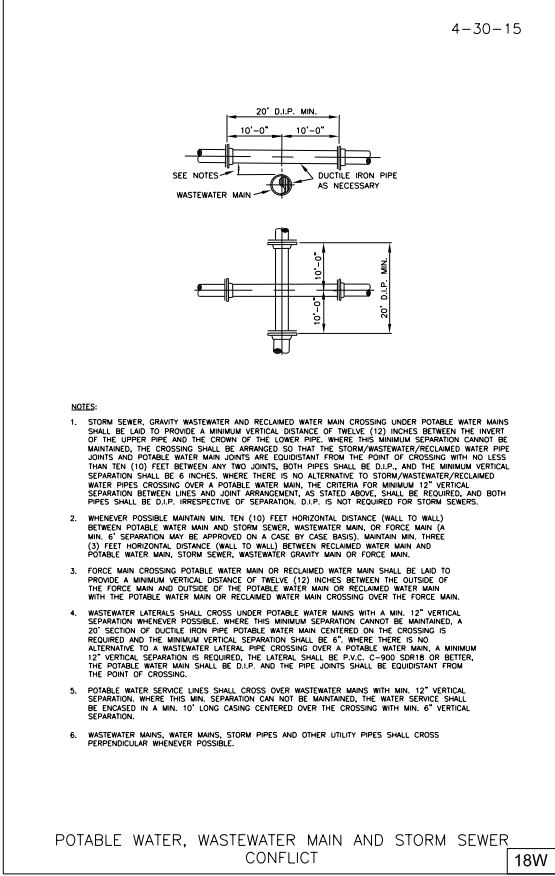
POTABLE WATER MAIN TYPICAL GATE VALVE SETTING AND MAIN CUT-IN DETAIL 13W



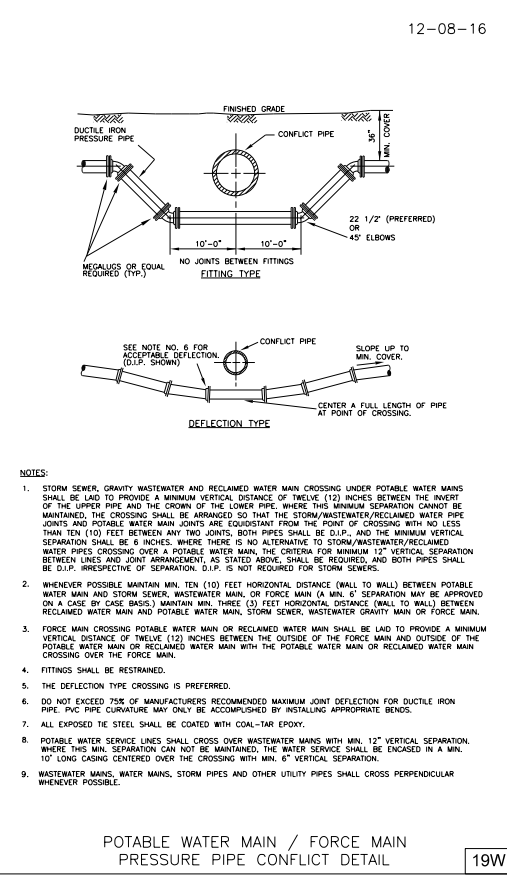
POTABLE WATER MAIN TYPICAL BUTTERFLY VALVE SETTING 14W



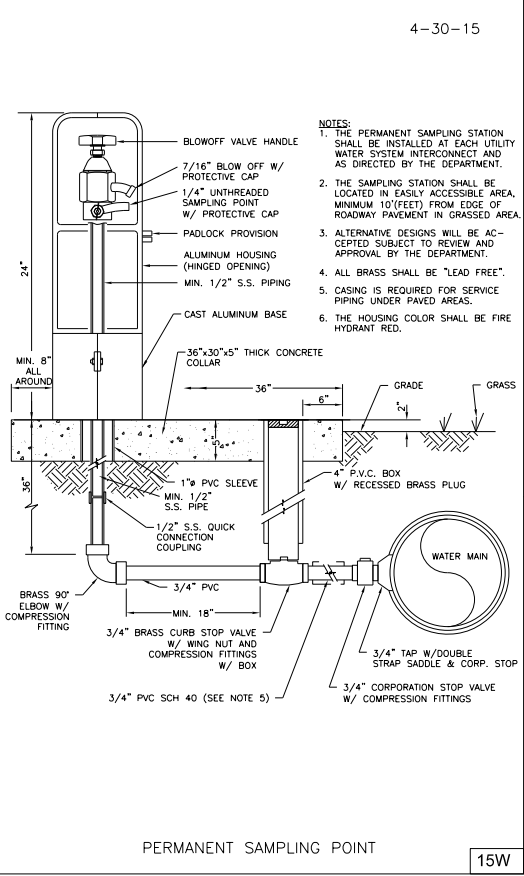
TYPICAL THRUST BLOCKS FOR PRESSURE PIPE 20W



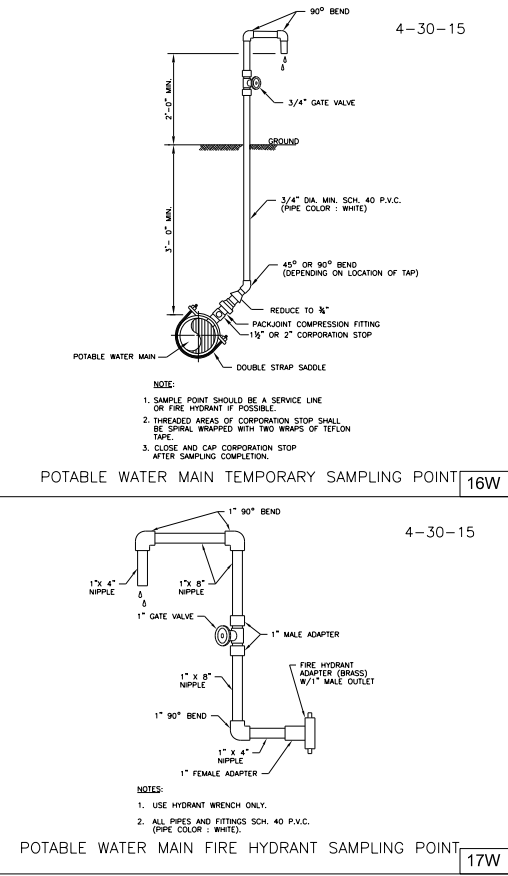
POTABLE WATER, WASTEWATER MAIN AND STORM SEWER CONFLICT 18W



POTABLE WATER MAIN / FORCE MAIN PRESSURE PIPE CONFLICT DETAIL 19W

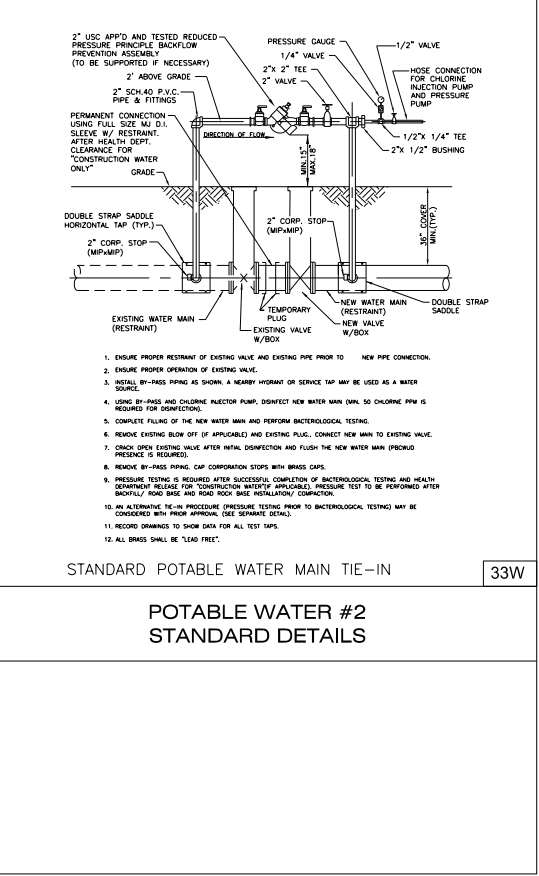


PERMANENT SAMPLING POINT 15W

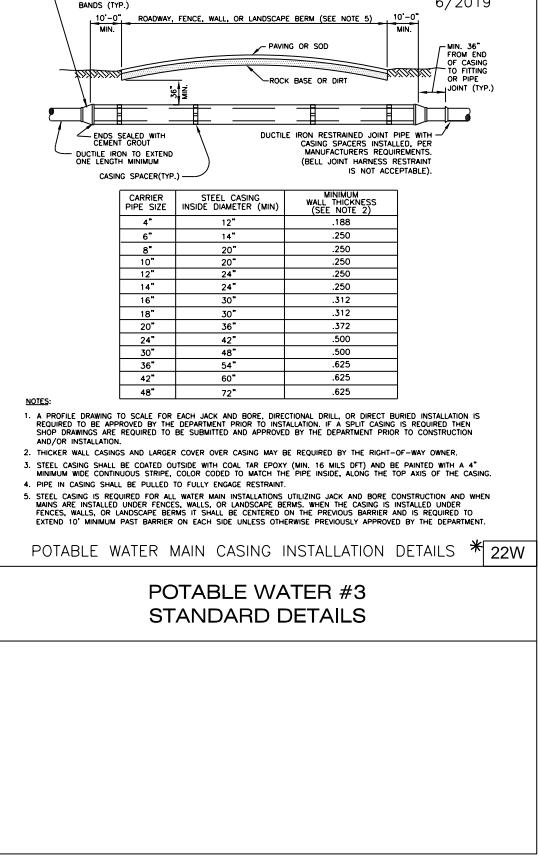
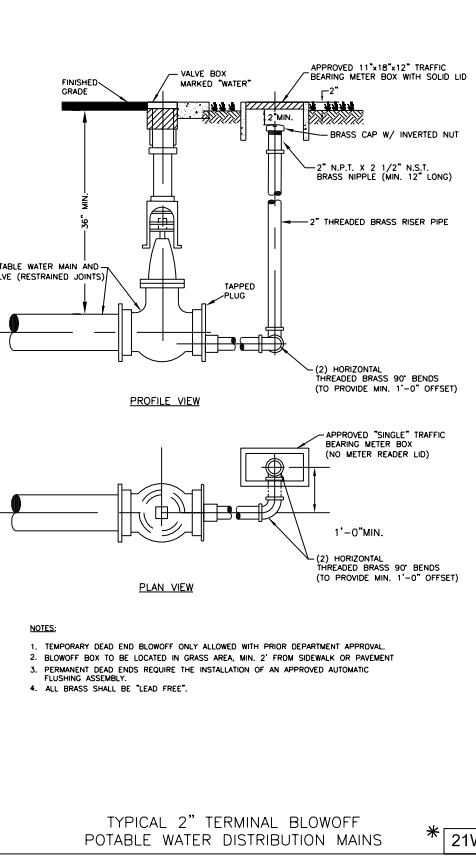
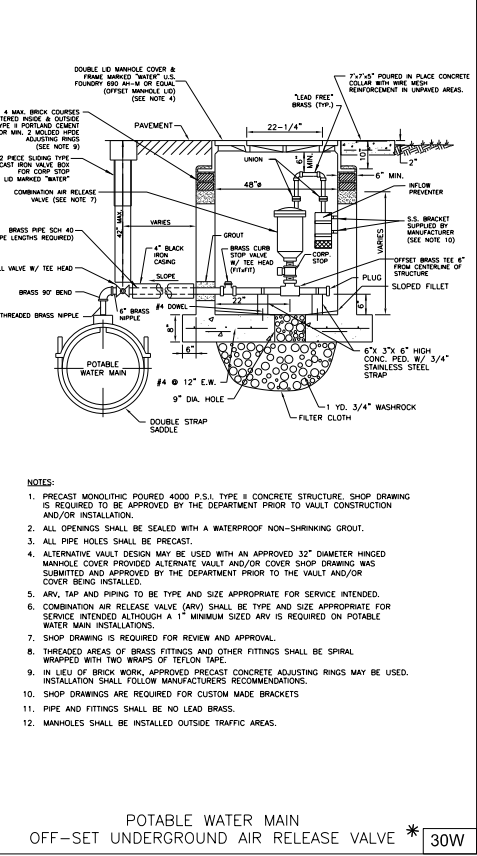
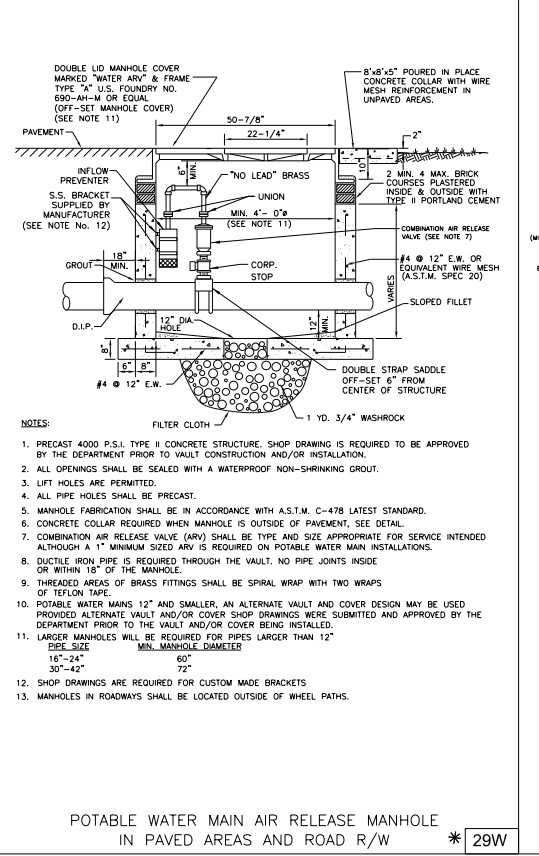
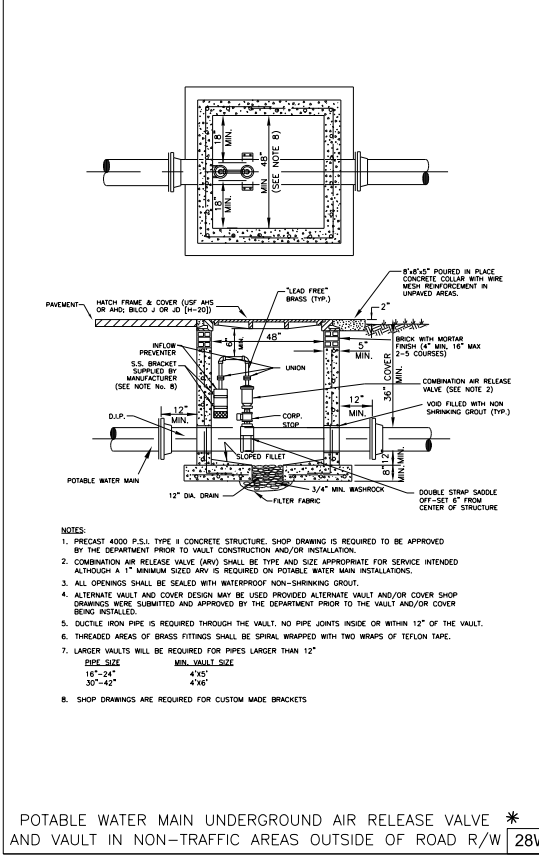
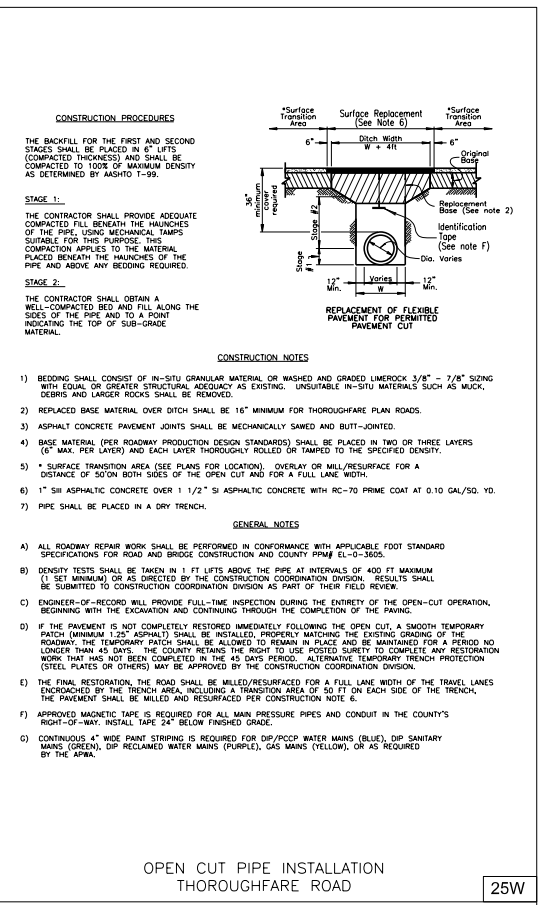
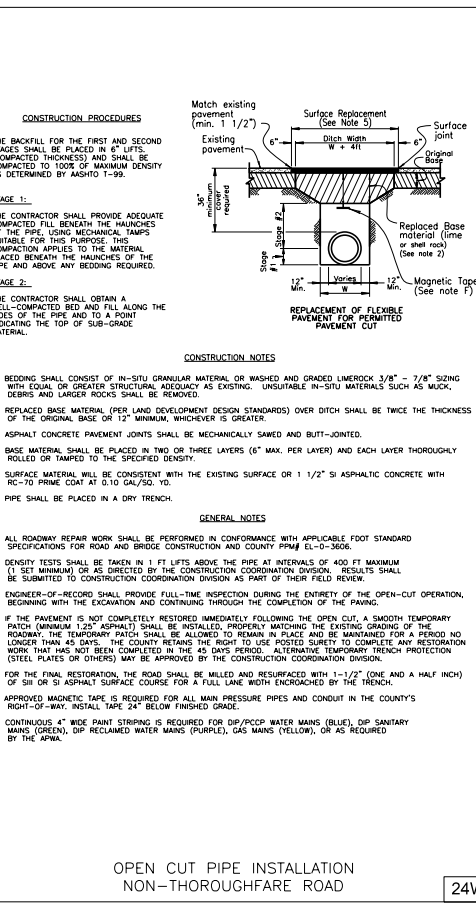
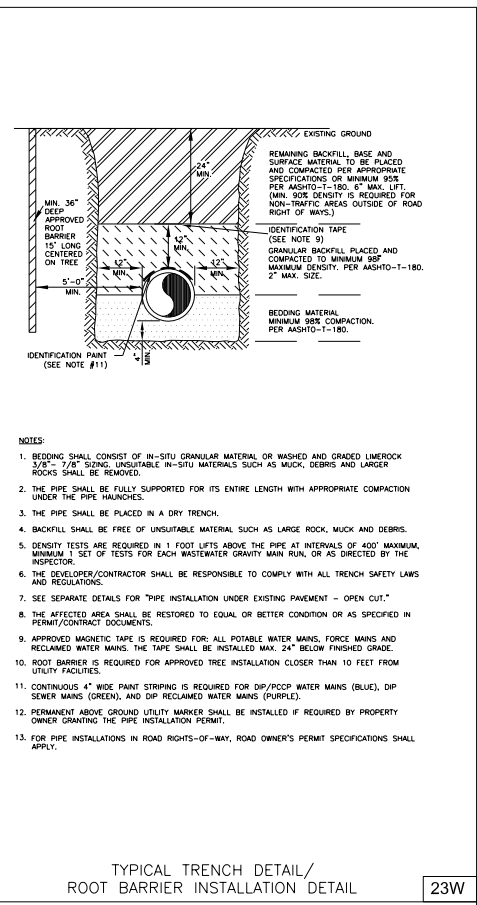
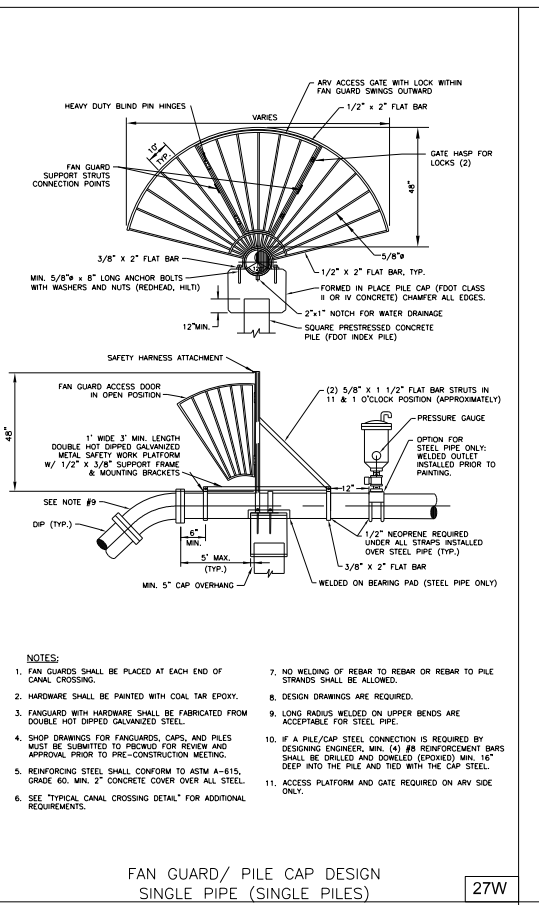
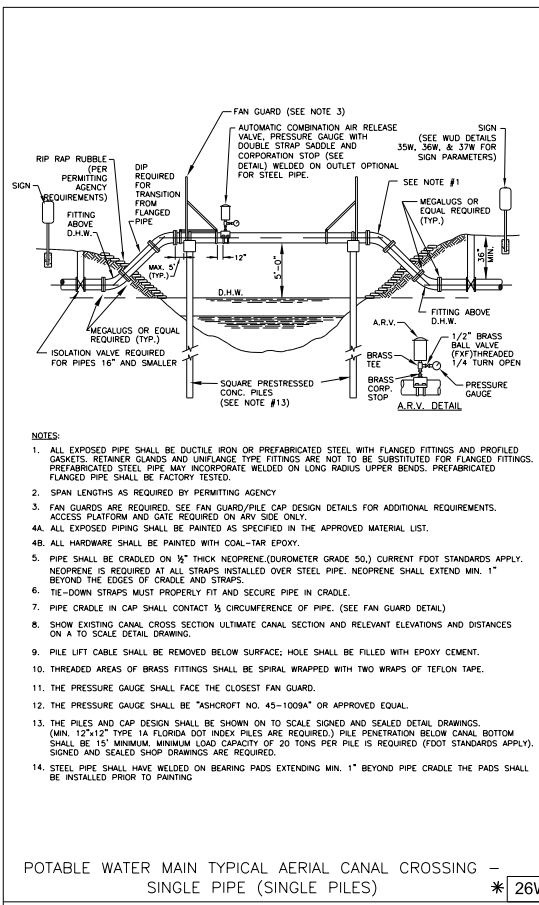


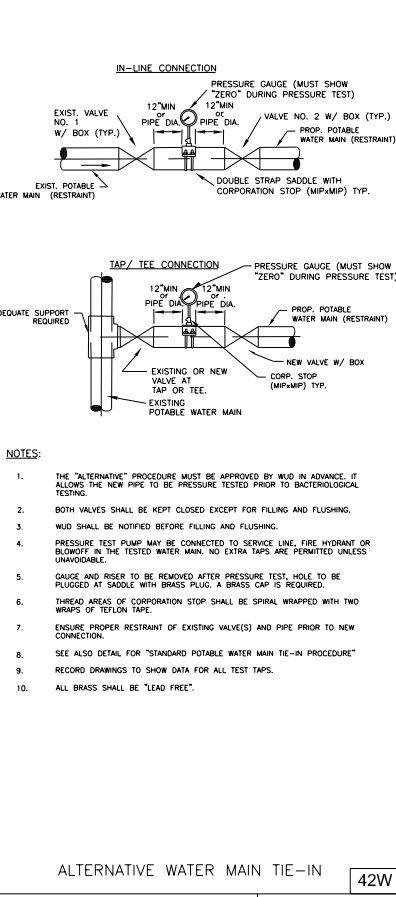
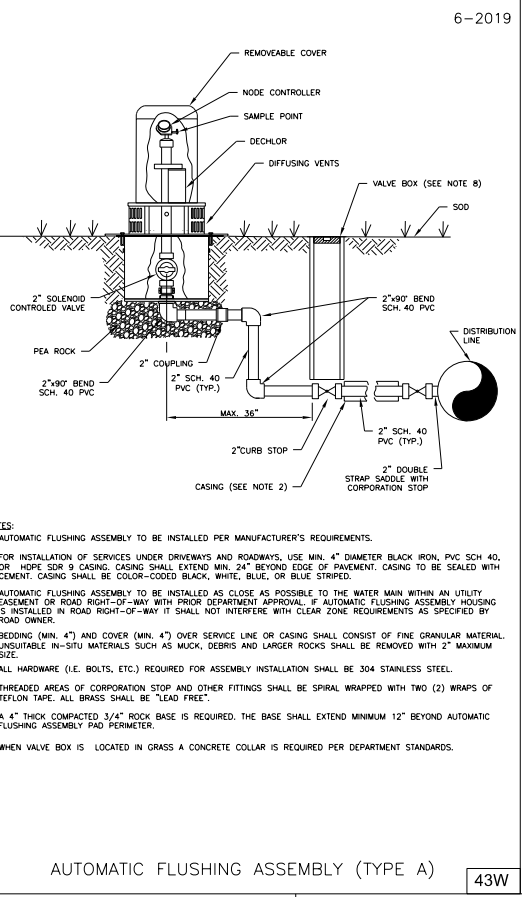
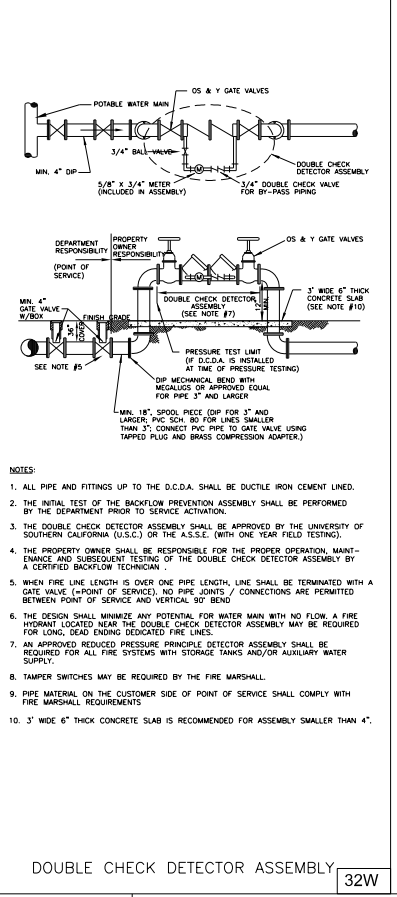
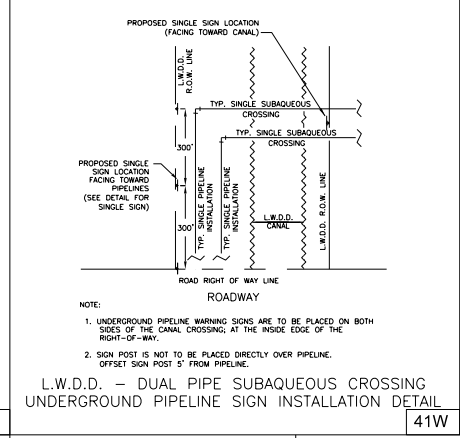
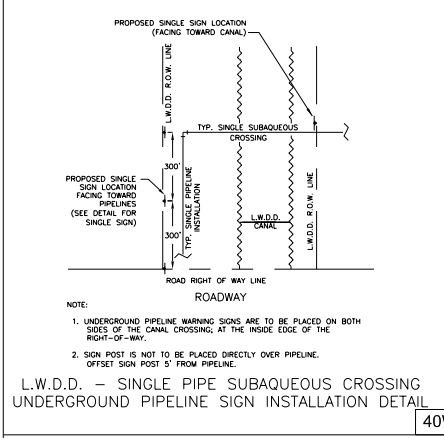
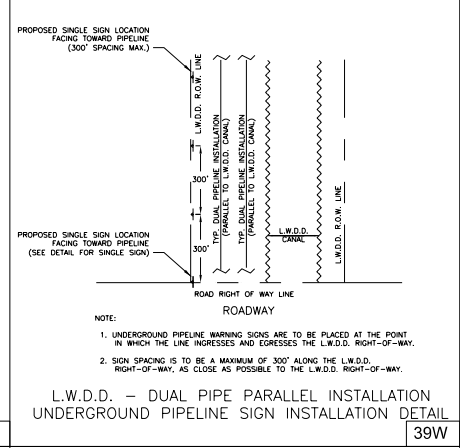
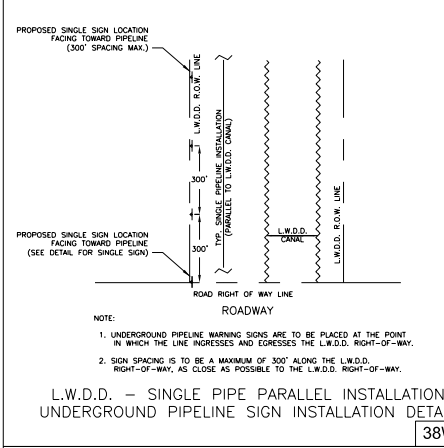
POTABLE WATER MAIN TEMPORARY SAMPLING POINT 16W

POTABLE WATER MAIN FIRE HYDRANT SAMPLING POINT 17W



STANDARD POTABLE WATER MAIN TIE-IN 33W





DEFINITIONS

GENERAL NOTES

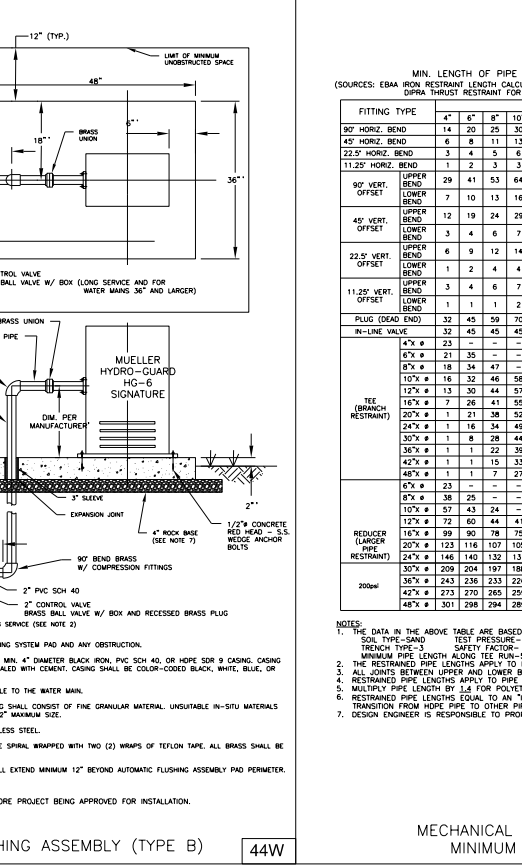
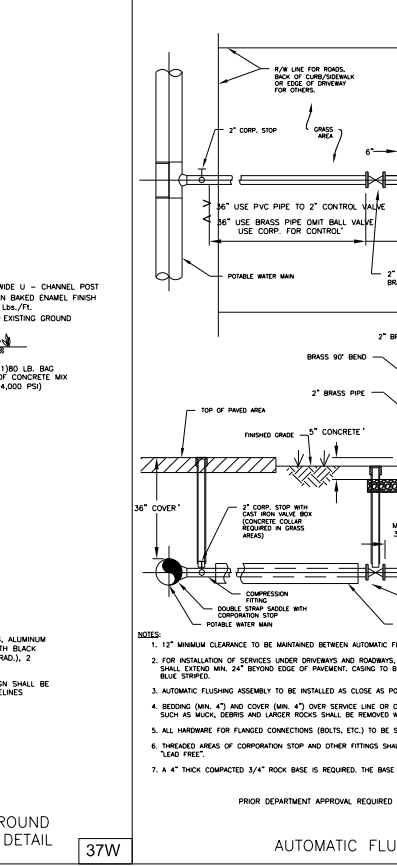
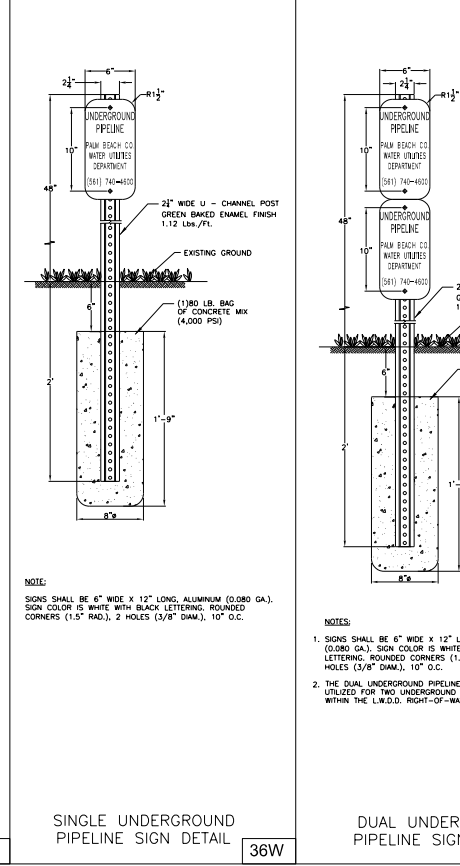
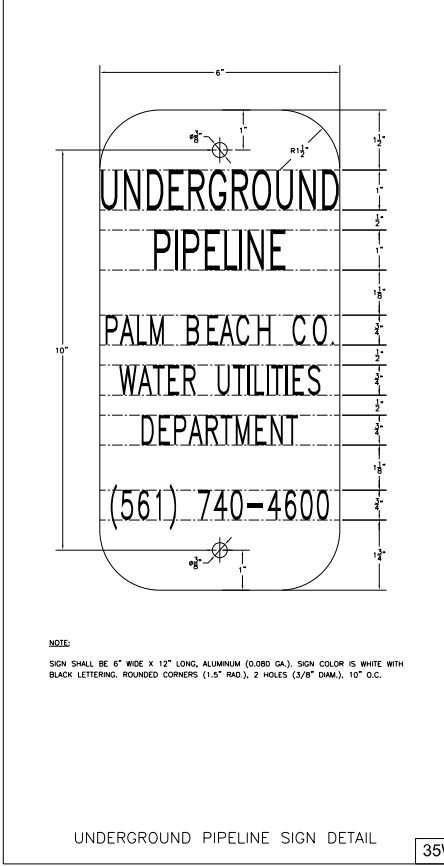
- DEPARTMENT - THE PALM BEACH COUNTY WATER UTILITIES DEPARTMENT.
- CONTRACTOR - UTILITY CONTRACTOR AND ALL UTILITY SUBCONTRACTORS.
- ENGINEER - ENGINEER RESPONSIBLE FOR INSPECTION AND CERTIFICATION.

PROCEDURE

- A PRE-CONSTRUCTION MEETING IS TO BE HELD PRIOR TO DELIVERY OF MATERIALS AND INITIATION OF ANY POTABLE WATER, RECLAIMED WATER AND/OR WASTEWATER SYSTEM CONSTRUCTION. THE MEETING SHALL BE ATTENDED BY THE DEPARTMENT, CONTRACTOR, ENGINEER AND OTHER INTERESTED PARTIES.
- ANY REVISIONS TO THE APPROVED PLANS SHALL BE CALLED TO THE ATTENTION OF THE DEPARTMENT PRIOR TO THE PRE-CONSTRUCTION MEETING. REVISED PLANS MUST BE APPROVED PRIOR TO THE MEETING.
- FIVE (5) COPIES OF THE CURRENT APPROVED MATERIAL LIST AND ALL NECESSARY SHOP DRAWINGS SHALL BE SUBMITTED FOR APPROVAL PRIOR TO SCHEDULING OF THE PRE-CONSTRUCTION MEETING.
- ALL APPLICABLE PERMITS MUST BE OBTAINED PRIOR TO PRECONSTRUCTION MEETING. (DOT, HEALTH DEPARTMENT, COUNTY ENGINEER, ETC.)
- THE CONTRACTOR SHALL MAINTAIN A CURRENT APPROVED SET OF CONSTRUCTION PLANS ON JOB SITE.
- ALL MATERIALS SUPPLIED SHALL CONFORM TO PRODUCT LIST AND SHOP DRAWINGS AS APPROVED PRIOR TO CONSTRUCTION. SUBSTITUTE MATERIALS SHALL NOT BE APPROVED AFTER DELIVERY TO THE JOB SITE. ALL REQUESTS FOR MATERIAL SUBSTITUTION SHALL BE APPROVED PRIOR TO DELIVERY OF THESE MATERIALS TO THE JOB SITE.
- THE LOCATIONS OF EXISTING UTILITIES SHOWN ON THE APPROVED PLANS ARE TO BE VERIFIED IN THE FIELD BY THE CONTRACTOR. APPROVAL OF THOSE PLANS OR FEATURES DEPICTED THEREON, ANY DISCREPANCY IN OR VARIATION FROM THE APPROVED PLANS IS TO BE BROUGHT TO THE ATTENTION OF THE DEPARTMENT BY THE ENGINEER AND CONTRACTOR. THE CONTRACTOR SHALL CONFIRM AND INSTALL (IF NECESSARY) ADEQUATE MECHANICAL PIPE / JOINT RESTRAINT ON EXISTING PIPES PRIOR TO CONNECTION.
- THE CONTRACTOR SHALL BE RESPONSIBLE AT ALL TIMES THROUGHOUT THE DURATION OF CONSTRUCTION FOR THE PROTECTION OF EXISTING AND NEWLY INSTALLED UTILITIES FROM DAMAGE OR DISRUPTION OF SERVICE. THE CONTRACTOR SHALL BE RESPONSIBLE FOR TAKING SUCH MEASURES AS NECESSARY TO PROTECT THE HEALTH, SAFETY AND WELFARE OF THOSE PERSONS HAVING ACCESS TO THE WORK SITE.
- THE CONTRACTOR SHALL BE RESPONSIBLE FOR OBTAINING LOCATIONS FROM ALL OTHER UTILITY FACILITIES.
- THE CONTRACTOR OR ENGINEER SHALL SCHEDULE INSPECTIONS AND TESTS A MINIMUM OF 24-48 HOURS IN ADVANCE.
- NO CONNECTION TO OR ANY OTHER CONSTRUCTION SHALL BE PERFORMED ON AN EXISTING DEPARTMENT OWNED OR MAINTAINED MAIN OR STRUCTURE WITHOUT THE PRESENCE OF A DEPARTMENT INSPECTOR.
- FACILITIES PROPOSED HEREIN SHALL BE CONSTRUCTED IN ACCORDANCE WITH THE APPROVED PLANS AND THE DEPARTMENT'S MINIMUM STANDARDS. CONFLICTS BETWEEN THE PRECEDING DOCUMENTS SHOULD BE CALLED TO THE ATTENTION OF THE DEPARTMENT FOR RESOLUTION. DEVIATIONS FROM THE APPROVED PLANS MUST BE APPROVED IN ADVANCE BY THE DEPARTMENT.
- UPON COMPLETION OF CONSTRUCTION, A FINAL INSPECTION SHALL VERIFY PROPER ADHERENCE TO ALL FACETS OF THE PLANS AND SPECIFICATIONS.

PRESSURE PIPE NOTES

- HERE SHALL BE 3/4" MINIMUM COVER FROM FINISHED GRADE TO TOP OF PIPE.
- DUCTILE IRON PIPE (DIP) THICKNESS SHALL CONFORM TO THE DEPARTMENT'S APPROVED MATERIAL LIST. POTABLE WATER AND RECLAIMED WATER MAINS DIP SHALL BE CEMENT LINED. FORCE MAIN DIP SHALL BE CEMENT EPXY LINED.
- PVC PRESSURE PIPE SHALL BE C-300, SDR-18, 150 PSI.
- ALL FITTINGS SHALL BE DUCTILE IRON WITH MECHANICAL JOINTS AND CEMENT OR APPROVED EPOXY LINING.
- POTABLE WATER, RECLAIMED WATER AND WASTEWATER FORCE MAIN VALVES 10 INCHES AND SMALLER SHALL BE RESILIENT SEAT GATE VALVES. PRESSURE-ANCHOR (12") OR LARGER FORCE MAIN VALVES SHALL BE RESILIENT SEAT GATE VALVES OR ECCENTRIC PLUG VALVES (IF APPROVED IN ADVANCE BY DEPARTMENT). POTABLE WATER AND RECLAIMED WATER MAIN VALVES LARGER THAN 10 INCHES SHALL BE BUTTERFLY VALVES.
- ALL TRENCHING, PIPE-LAYING, BACKFILL, PRESSURE TESTING, AND DISINFECTION MUST COMPLY WITH ALL APPLICABLE FEDERAL, STATE, COUNTY AND HEALTH DEPARTMENT STANDARDS AND REGULATIONS.



MIN. LENGTH OF PIPE (FEET) TO BE RESTRAINED
(SOURCES: EBAN IRON RESTRAINT LENGTH CALCULATION PROGRAM FOR PVC PIPE, RELEASE 3.1, AND CORUM THURST RESTRAINT FOR DUCTILE IRON PIPE, RELEASE 3.2)

FITTING TYPE	PIPE SIZE															
	4"	6"	8"	10"	12"	16"	20"	24"	30"	36"	42"	48"	6"	8"	10"	12"
90° HORIZ. BEND	14	20	25	30	35	45	54	62	68	112	124	135	11	13	15	18
45° HORIZ. BEND	4	6	8	11	13	15	19	22	26	41	46	51	3	4	5	6
22.5° HORIZ. BEND	3	4	5	6	7	9	11	12	19	22	25	27	2	3	4	5
11.25° HORIZ. BEND	1	2	3	3	4	4	5	6	10	11	12	13	1	2	3	4
90° VERT. OFFSET	29	41	53	64	74	95	115	134	154	246	276	304	10	13	16	19
45° VERT. OFFSET	7	10	13	16	19	25	30	35	57	66	74	83	3	4	5	6
22.5° VERT. OFFSET	12	19	24	29	34	39	48	56	89	102	114	126	4	6	7	8
11.25° VERT. OFFSET	3	4	6	7	8	10	12	15	23	27	31	34	2	3	4	5
90° VERT. OFFSET	6	9	12	14	17	19	23	27	43	49	55	60	2	4	4	5
45° VERT. OFFSET	1	2	4	4	5	6	7	11	13	15	16	16	1	2	3	3
22.5° VERT. OFFSET	3	4	6	7	8	9	11	13	21	24	27	30	2	3	4	5
11.25° VERT. OFFSET	1	1	1	2	2	2	3	3	6	6	7	8	1	1	2	2
PLUG (HEAD END)	32	43	50	70	83	107	129	151	214	246	276	304	10	13	16	19
IN-LINE VALVE	32	45	45	45	45	65	80	100	125	140	155	10	13	16	19	
4" x 4" Tee	23	-	-	-	-	-	-	-	-	-	-	-	-	-	-	-
6" x 6" Tee	21	35	-	-	-	-	-	-	-	-	-	-	-	-	-	-
8" x 8" Tee	18	34	47	-	-	-	-	-	-	-	-	-	-	-	-	-
10" x 10" Tee	16	32	46	58	-	-	-	-	-	-	-	-	-	-	-	-
12" x 12" Tee	13	30	44	57	69	-	-	-	-	-	-	-	-	-	-	-
16" x 16" Tee	7	26	41	58	67	90	-	-	-	-	-	-	-	-	-	-
20" x 20" Tee	1	21	38	52	65	88	109	-	-	-	-	-	-	-	-	-
24" x 24" Tee	1	16	34	49	62	86	108	129	-	-	-	-	-	-	-	-
30" x 30" Tee	1	8	28	44	58	83	106	127	208	-	-	-	-	-	-	-
36" x 36" Tee	1	1	22	39	54	80	103	124	208	243	-	-	-	-	-	-
42" x 42" Tee	1	1	15	33	49	77	100	122	209	270	-	-	-	-	-	-
48" x 48" Tee	1	1	7	27	44	73	97	120	203	269	298	-	-	-	-	-
6" x 6" Tee	38	23	-	-	-	-	-	-	-	-	-	-	-	-	-	-
8" x 8" Tee	37	43	24	-	-	-	-	-	-	-	-	-	-	-	-	-
10" x 10" Tee	32	60	44	41	-	-	-	-	-	-	-	-	-	-	-	-
12" x 12" Tee	29	90	78	75	45	-	-	-	-	-	-	-	-	-	-	-
16" x 16" Tee	12	118	107	105	81	45	-	-	-	-	-	-	-	-	-	-
20" x 20" Tee	146	132	131	111	82	45	-	-	-	-	-	-	-	-	-	-
24" x 24" Tee	209	204	197	188	177	153	116	75	-	-	-	-	-	-	-	-
30" x 30" Tee	243	236	233	226	217	196	168	136	74	-	-	-	-	-	-	-
36" x 36" Tee	275	270	265	259	252	234	211	183	133	72	-	-	-	-	-	-
42" x 42" Tee	301	298	294	289	283	268	249	226	183	131	71	-	-	-	-	-

MECHANICAL THRUST RESTRAINT MINIMUM PIPE LENGTHS

Notes:

- THE DATA IN THE ABOVE TABLE ARE BASED UPON THE FOLLOWING INSTALLATION CONDITIONS:
SOIL TYPE - SAND
TEST PRESSURE - 150 PSIG/200 PSI
TRENCH TYPE - 3'
SAFETY FACTOR - 1.5
VERTICAL OFFSET - 3'
- MINIMUM PIPE LENGTH ALONG TEE RAYS - 1.5
- THE RESTRAINED PIPE LENGTHS APPLY TO DUCTILE IRON AND PVC PIPE.
- ALL JOINTS BETWEEN UPPER AND LOWER BENDS SHALL BE RESTRAINED.
- RESTRAINED PIPE LENGTHS APPLY TO PIPE ON BOTH SIDES OF VALVES AND FITTINGS.
- MULTIPLY PIPE LENGTH BY 1.6 FOR POLYETHYLENE ENHANCED PIPE.
- RESTRAINED PIPE LENGTHS EQUAL TO AN "IN-LINE VALVE" CONDITION ARE REQUIRED AT EACH END OF A TRANSITION FROM HOPE PIPE TO OTHER PIPE MATERIALS.
- DESIGN ENGINEER IS RESPONSIBLE TO PROPERLY SIZE THE RESTRAINT PIPE LENGTHS FOR THE PROJECT.

MAXIMUM QUANTITY OF WATER (GALLONS PER HOUR) THAT MAY BE SUPPLIED TO MAINTAIN PRESSURE WITHIN 5 P.S.I. OF THE SPECIFIED TEST PRESSURE (MECHANICAL OR PUSH-ON JOINT, 18 FT. NOMINAL LENGTHS, PER 1000 FT. OF PIPE)

AVG. TEST PRESSURE (PSI)	PIPE DIAMETER (INCHES)															
	2	3	4	6	8	10	12	14	16	18	20	24	30	36	42	48
150	0.10	0.14	0.18	0.27	0.37	0.46	0.55	0.64	0.73	0.83	0.92	1.10	1.38	1.65	1.93	2.20
200	0.10	0.15	0.21	0.31	0.42	0.53	0.63	0.74	0.84	0.95	1.06	1.27	1.59	1.91	2.22	2.54

FORMULA BASIS: $L = (S \times (D) \times (P))^{1/2} \times 1/2$

L = MAXIMUM QUANTITY OF WATER TO BE ADDED (GALLONS PER HOUR)
S = LENGTH OF PIPE TESTED (FEET)
D = DIAMETER OF PIPE (INCHES)
P = TEST PRESSURE (P.S.I.)

NOTES:

- TO OBTAIN THE MAXIMUM QUANTITY OF WATER FOR PIPE WITH 20 FT. NOMINAL LENGTHS, MULTIPLY THE QUANTITY CALCULATED FROM THE TABLE BY 0.9.
- THE MAXIMUM QUANTITY OF ADDED WATER FOR A PIPELINE IS CALCULATED BY MULTIPLYING THE QUANTITY PER HOUR AS OBTAINED FROM THE ABOVE TABLE BY THE DURATION OF THE TEST IN HOURS AND BY THE TOTAL LENGTH OF THE LINE BEING TESTED DIVIDED BY 1,000. IF THE LINE UNDER TEST CONTAINS SECTIONS OF VARIOUS DIAMETERS, THE MAXIMUM QUANTITY ADDED WILL BE THE SUM OF THE COMPUTED QUANTITIES FOR EACH SIZE.
- MAXIMUM TEST LENGTH = 2,500 FEET PER SECTION.
- THIS STANDARD SHALL REFLECT ANY REVISION OF A.W.B.A. C-600. HOWEVER, THE MAXIMUM QUANTITY OF WATER ADDED SHALL NOT EXCEED 50% OF THE RECOMMENDED LIMIT PER APPLICABLE A.W.B.A. C-600 STANDARD.
- STANDARD TEST PRESSURE = 150 P.S.I.; 200 P.S.I. FOR MAINS LARGER THAN 24"
- PRESSURE TEST DURATION TO BE MIN. 2 HOURS.

REVISIONS		DESCRIPTION	
DATE	DESCRIPTION	DATE	DESCRIPTION

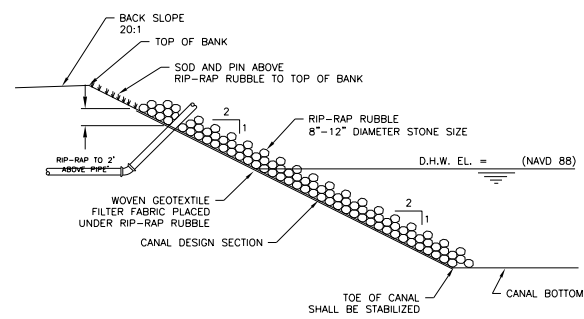
RODERICK MYRICK, P.E.
A.E. LICENSE NUMBER 56969
PE ENGINEERING, INC.
219 N. NEWNAN STREET, 4TH FLOOR
JACKSONVILLE, FL - 32202
CERTIFICATE OF AUTHORIZATION: 27212

CITY OF PAHOKEE
ROAD NO. COUNTY FINANCIAL PROJECT ID
PALM BEACH 442030-1-54-01

WUD STANDARD DETAILS

SHEET NO. W-08

6/2019



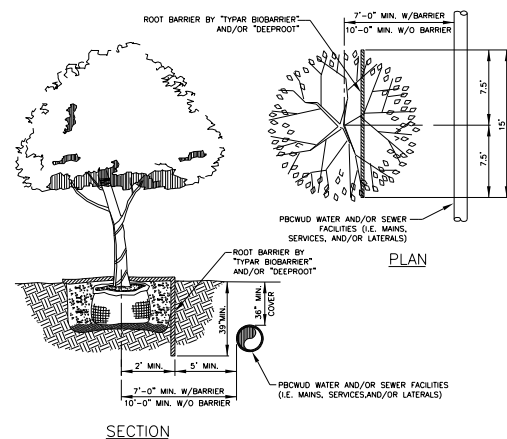
NOTES:

1. RIP-RAP RUBBLE AND ITS INSTALLATION MUST MEET CANAL OWNERSHIP SPECIFICATIONS AND PERMITTING REQUIREMENTS.
2. DUMP RUBBLE IN PLACE FORMING A COMPACT LAYER CONFORMING TO THE CANAL DESIGN SECTION SLOPE. ENSURE THAT RUBBLE DOES NOT SEGREGATE SO THAT SMALLER PIECES EVENLY FILL THE VOIDS BETWEEN LARGER PIECES.
3. AN ALTERNATIVE DESIGN WILL BE CONSIDERED AND MUST RECEIVE PRIOR APPROVAL FROM THE CANAL PROPERTY OWNER.

RIP-RAP RUBBLE DETAIL

45W

6/2019



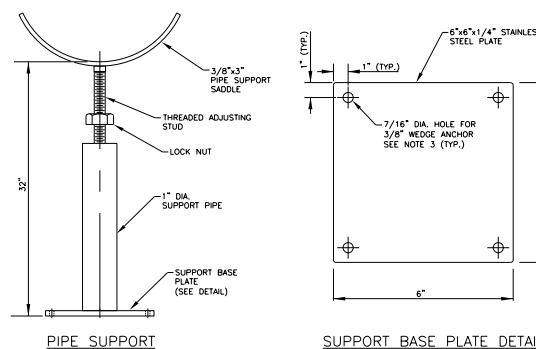
NOTES:

1. TREES SHOWN ON THIS PLAN ARE FOR GRAPHIC REPRESENTATION ONLY. TREE SPACING IS BASED ON DESIGN REQUIREMENTS AND THE TREES SHOWN ON THESE PLANS ATTEMPT TO ACCOMPLISH THAT SPACING WHILE MAINTAINING THE REQUIRED SETBACKS FROM UTILITIES. TREES MAY BE FIELD ADJUSTED TO AVOID CONFLICTS WITH DRIVEWAYS AND UNDERGROUND UTILITIES. IN ANY CASE THE TREES SHALL BE LOCATED IN THE FIELD IN ACCORDANCE WITH THE PLANTING DETAILS SHOWN HEREON.
2. TREES ARE TO BE INSTALLED WITH A TEN FOOT (10') SEPARATION FROM ANY WATER OR SEWER MAIN AND/OR SERVICE, HYDRANTS, AND LIFT STATIONS. IF A TEN FOOT (10') SEPARATION CANNOT BE ACHIEVED, THE TREE CAN BE INSTALLED WITH A ROOT BARRIER SYSTEM. HOWEVER, IN NO CASE SHALL A TREE ENCRDACH INTO A PBCUE WITHOUT PRIOR DEPARTMENT APPROVAL.
3. ONLY SOD CAN BE INSTALLED WITHIN 7.5' MINIMUM OF A FLUSHING HYDRANT UNLESS OTHERWISE APPROVED BY THE FIRE MARSHAL AND THE DEPARTMENT.
4. SOD ONLY SHALL BE INSTALLED WITHIN 5.0' MINIMUM OF ANY DEPARTMENT RECLAIMED WATER METER.

LANDSCAPE AND ROOT BARRIER DETAIL

46W

6/2019



NOTES:

1. SHOP DRAWING FOR THE METER ASSEMBLY PIPE SUPPORT IS REQUIRED TO BE SUBMITTED FOR APPROVAL BY THE DEPARTMENT PRIOR TO THE PIPE SUPPORT BEING CONSTRUCTED AND/OR INSTALLED. ALL PIPE SUPPORTS FOR EACH METER ASSEMBLY INSTALLATION SHALL BE THE SAME.
2. ALL PIPE SUPPORT MATERIALS AND MOUNTING HARDWARE ARE REQUIRED TO BE 304 STAINLESS STEEL.
3. THE REQUIRED WEDGE ANCHORS FOR EACH SUPPORT SHALL BE 3/8" DIAMETER WITH NOMINAL EMBEDMENT OF 2-3/8". EACH ANCHOR SHALL HAVE A WASHER, LOCK WASHER, AND NUT.

ABOVE GROUND WATER METER INSTALLATION PIPE SUPPORT

47W

REVISIONS

DATE	DESCRIPTION	DATE	DESCRIPTION

RODERICK MYRICK, P.E.
 P.E. LICENSE NUMBER 56969
 AE ENGINEERING, INC.
 219 N. NEWNAN STREET, 4TH FLOOR
 JACKSONVILLE, FL - 32202
 CERTIFICATE OF AUTHORIZATION: 27212

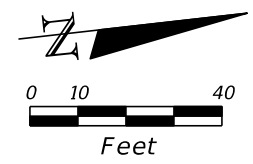
CITY OF PAHOKEE

ROAD NO.	COUNTY	FINANCIAL PROJECT ID
	PALM BEACH	442030-1-54-01

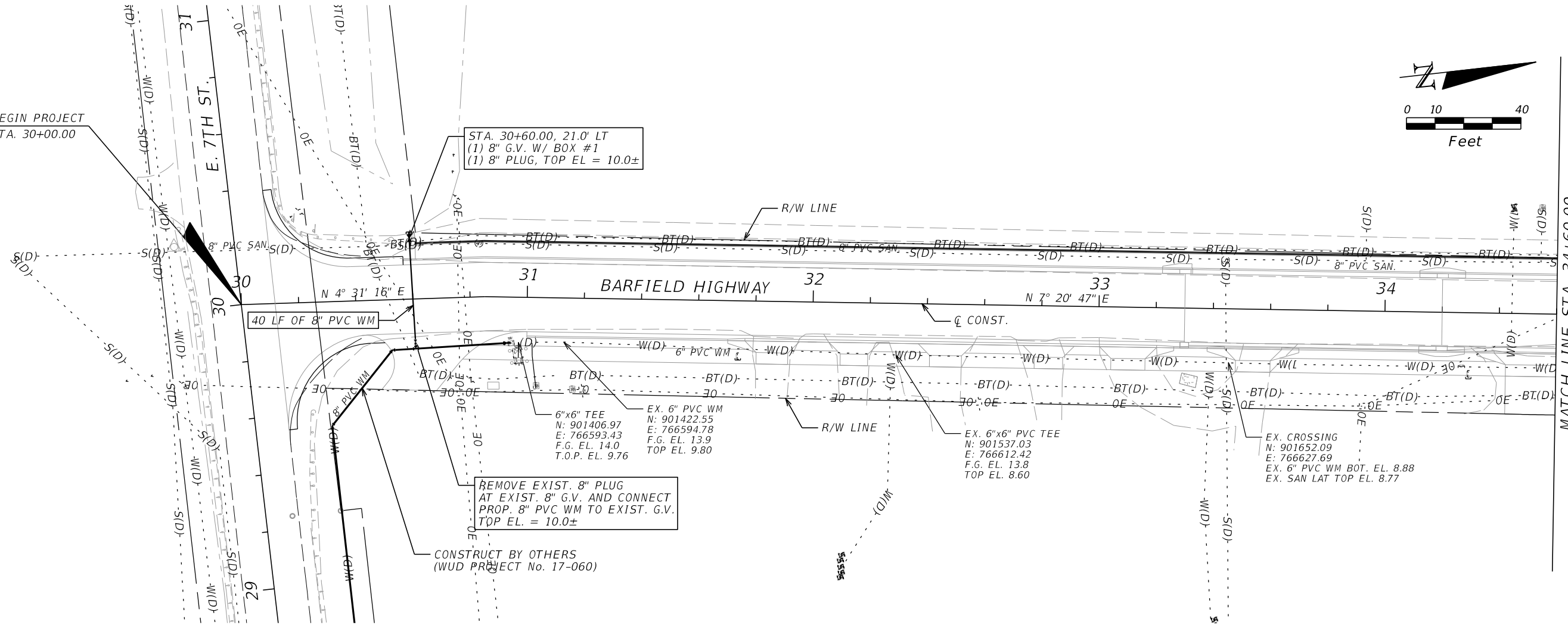
WUD STANDARD DETAILS

SHEET NO.

W-09



BEGIN PROJECT
STA. 30+00.00



STA. 30+60.00, 21.0' LT
(1) 8" G.V. W/ BOX #1
(1) 8" PLUG, TOP EL. = 10.0±

REMOVE EXIST. 8" PLUG
AT EXIST. 8" G.V. AND CONNECT
PROP. 8" PVC WM TO EXIST. G.V.
TOP EL. = 10.0±

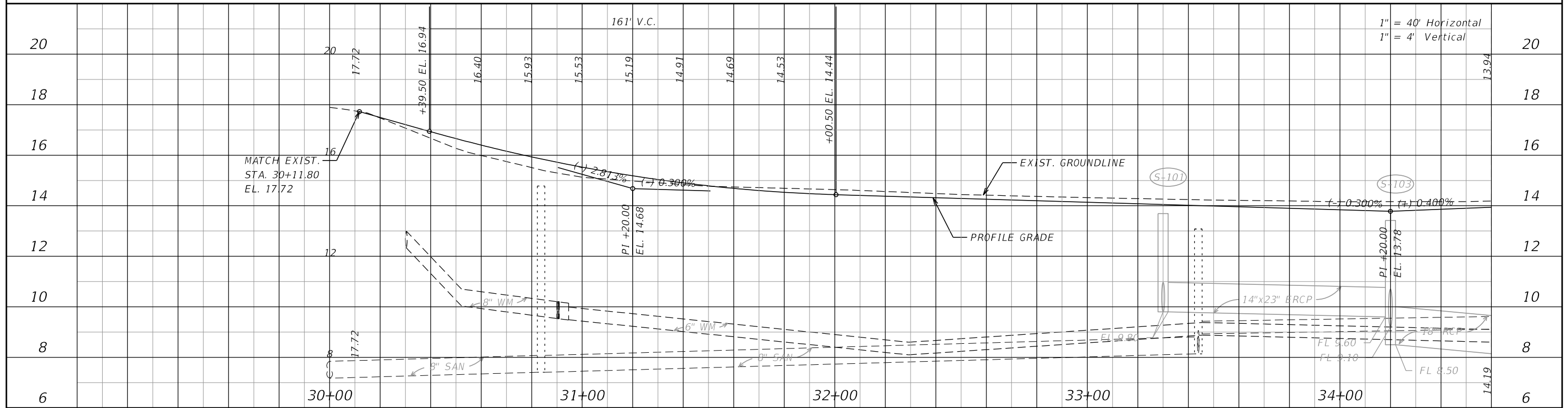
CONSTRUCT BY OTHERS
(WUD PROJECT No. 17-060)

6"x6" TEE
N: 901406.97
E: 766593.43
F.G. EL. 14.0
T.O.P. EL. 9.76

EX. 6" PVC WM
N: 901422.55
E: 766594.78
F.G. EL. 13.9
TOP EL. 9.80

EX. 6"x6" PVC TEE
N: 901537.03
E: 766612.42
F.G. EL. 13.8
TOP EL. 8.60

EX. CROSSING
N: 901652.09
E: 766627.69
EX. 6" PVC WM BOT. EL. 8.88
EX. SAN LAT TOP EL. 8.77



1" = 40' Horizontal
1" = 4' Vertical

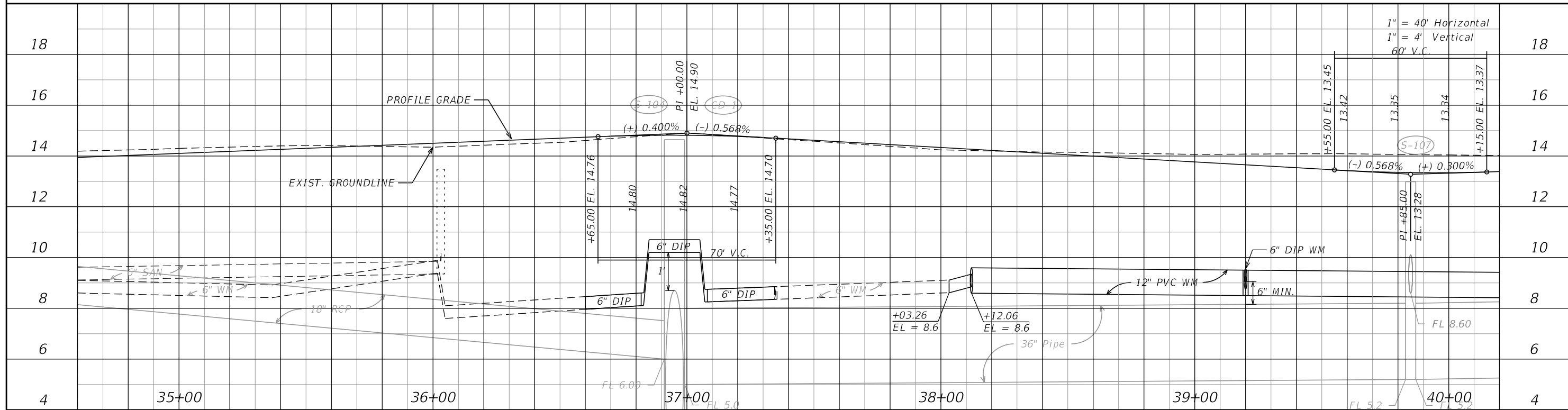
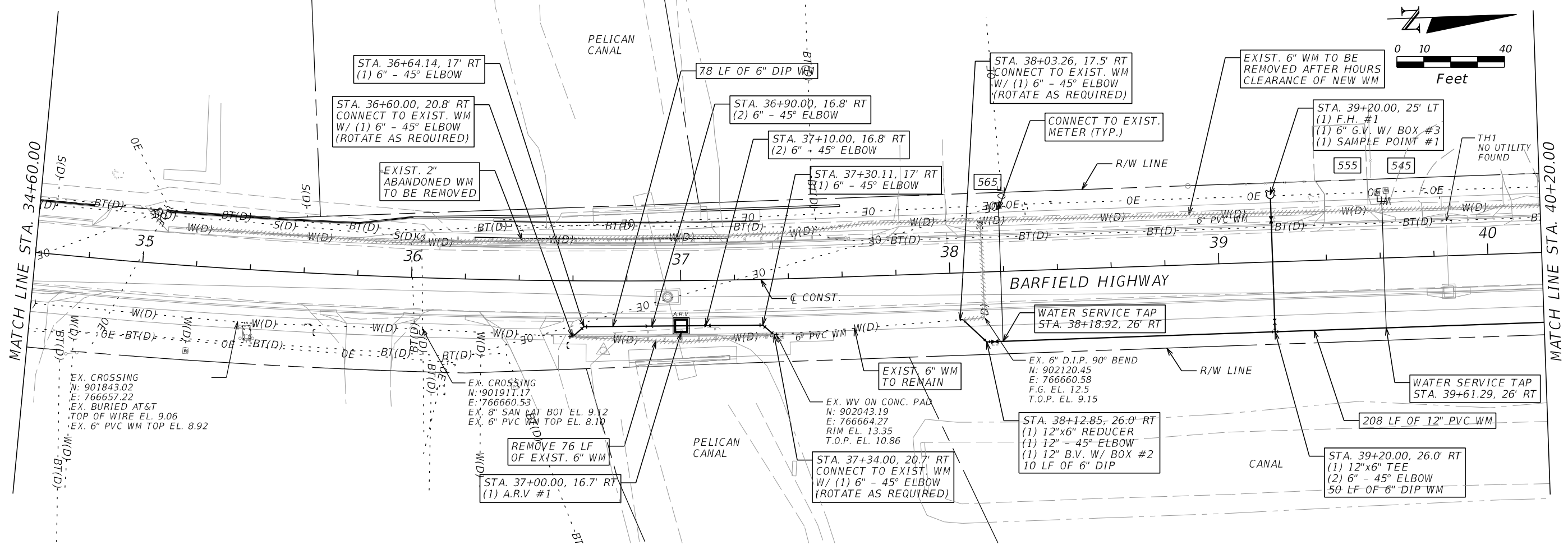
REVISIONS			
DATE	DESCRIPTION	DATE	DESCRIPTION

RODERICK MYRICK, P.E.
P.E. LICENSE NUMBER 56969
AE ENGINEERING, INC.
219 N. NEWNAN STREET, 4TH FLOOR
JACKSONVILLE, FL 32202
CERTIFICATE OF AUTHORIZATION: 27212

CITY OF PAHOKEE		
ROAD NO.	COUNTY	FINANCIAL PROJECT ID
	PALM BEACH	442030-154-01

WATER MAIN REPLACEMENT
PLAN - PROFILE

SHEET NO.
W-10



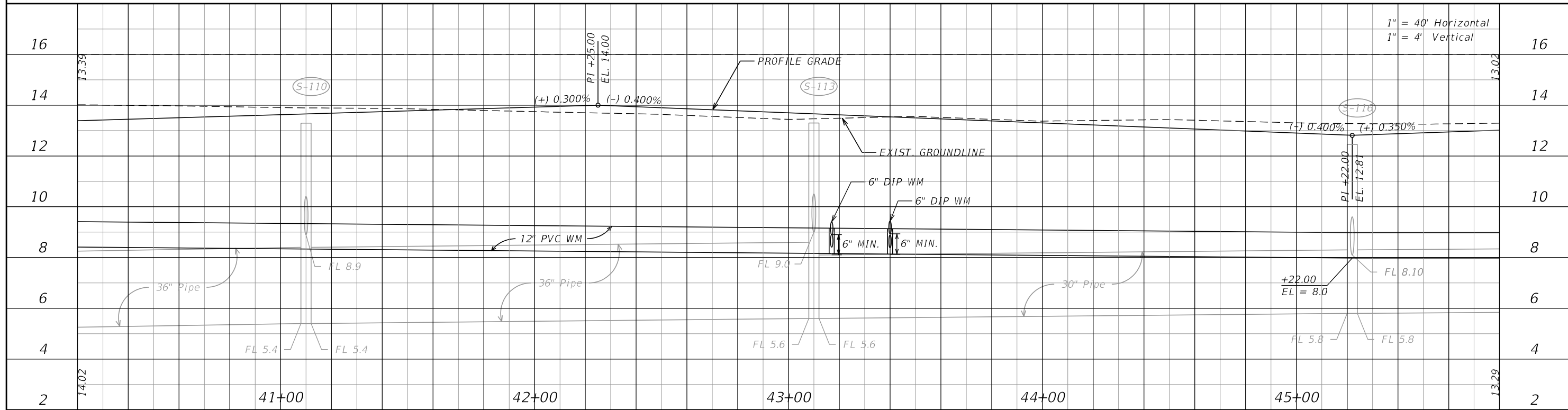
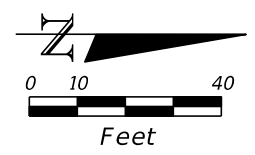
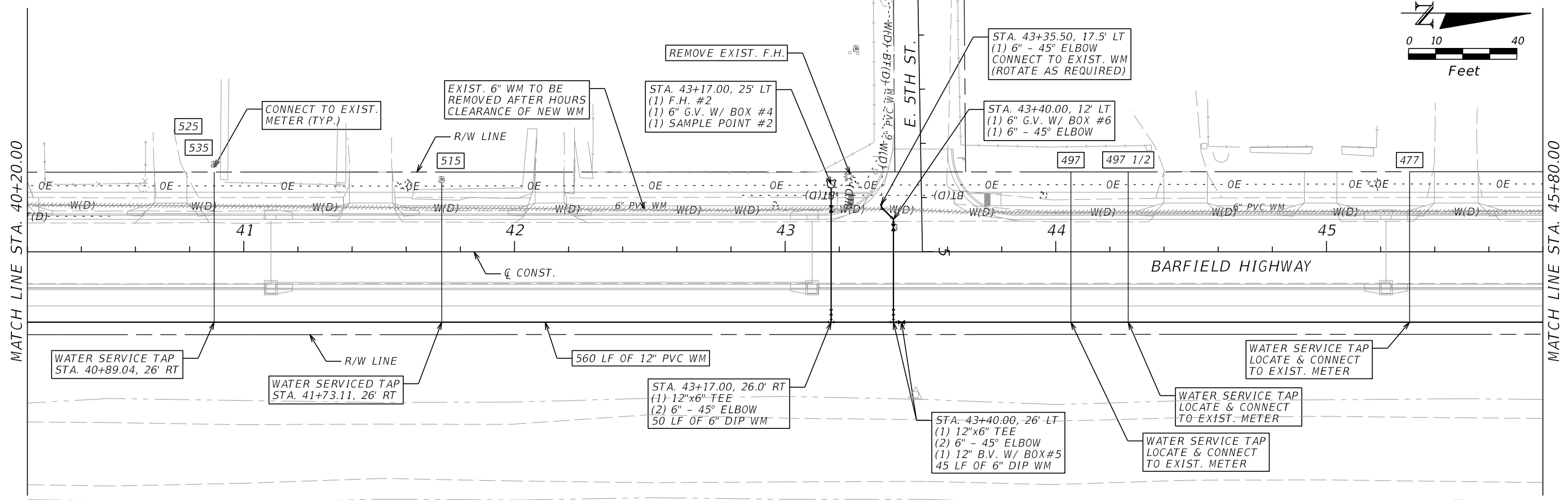
REVISIONS			
DATE	DESCRIPTION	DATE	DESCRIPTION

RODERICK MYRICK, P.E.
 P.E. LICENSE NUMBER 56969
 AE ENGINEERING, INC.
 219 N. NEWNAN STREET, 4TH FLOOR
 JACKSONVILLE, FL 32202
 CERTIFICATE OF AUTHORIZATION: 27212

CITY OF PAHOKEE		
ROAD NO.	COUNTY	FINANCIAL PROJECT ID
	PALM BEACH	442030-1-54-01

WATER MAIN REPLACEMENT PLAN - PROFILE		SHEET NO. W-11
--	--	-------------------

THE OFFICIAL RECORD OF THIS SHEET IS THE ELECTRONIC FILE DIGITALLY SIGNED AND SEALED UNDER RULE 61G15-23.004, F.A.C.



REVISIONS			
DATE	DESCRIPTION	DATE	DESCRIPTION

RODERICK MYRICK, P.E.
 P.E. LICENSE NUMBER 56969
 AE ENGINEERING, INC.
 219 N. NEWMAN STREET, 4TH FLOOR
 JACKSONVILLE, FL 32202
 CERTIFICATE OF AUTHORIZATION: 27212

CITY OF PAHOKEE		
ROAD NO.	COUNTY	FINANCIAL PROJECT ID
	PALM BEACH	442030-1-54-01

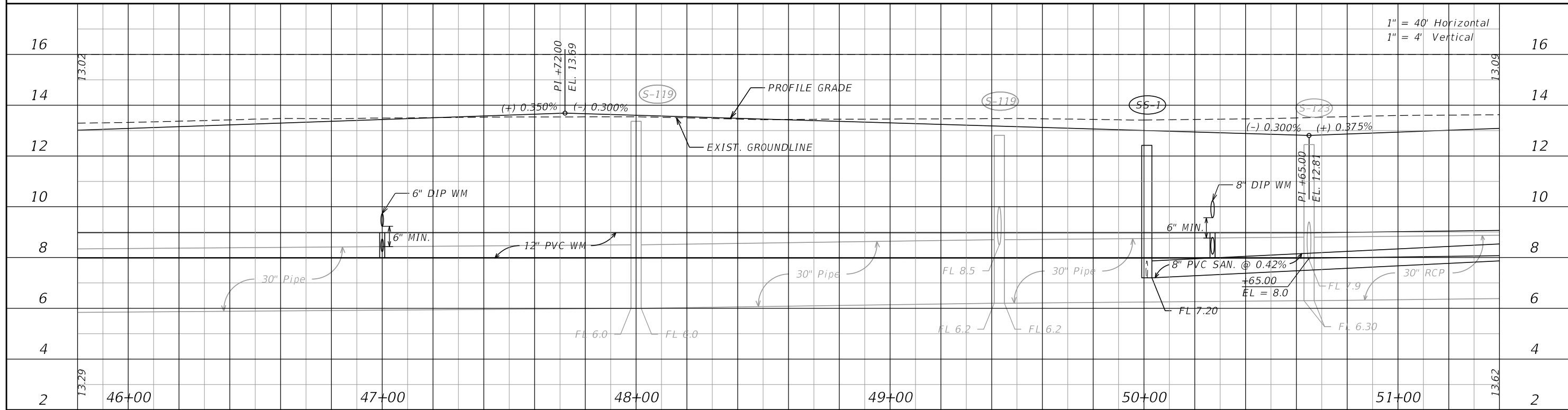
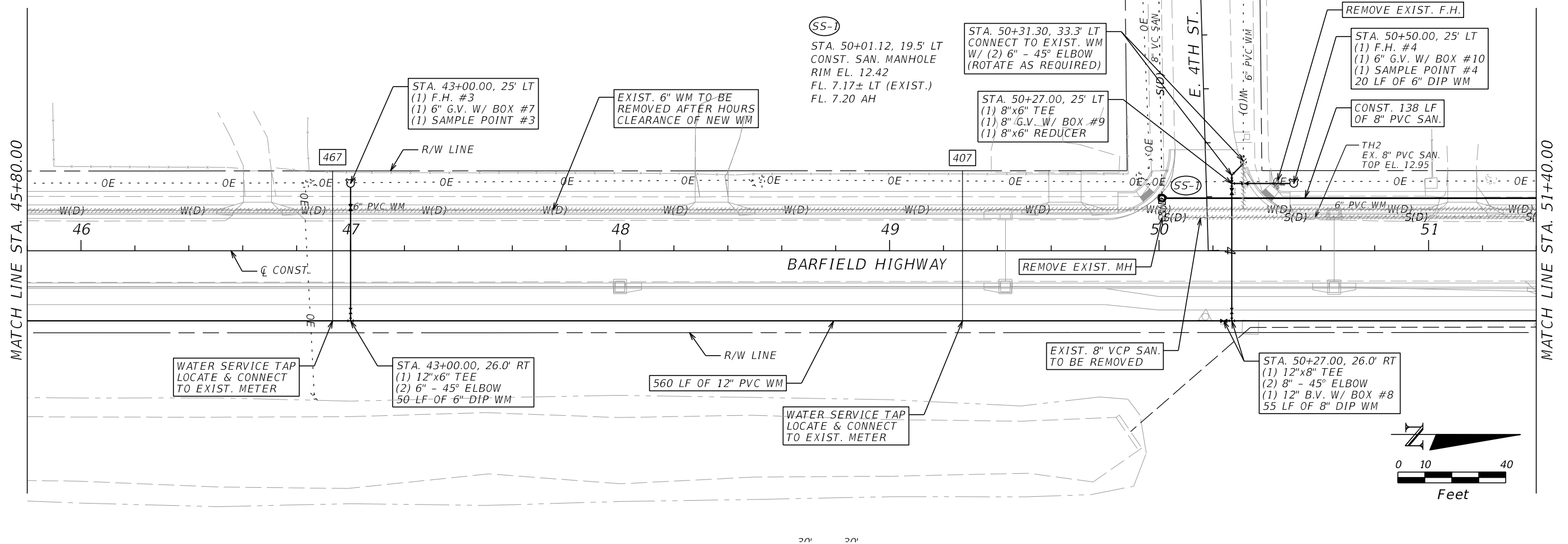
**WATER MAIN REPLACEMENT
 PLAN - PROFILE**

SHEET NO.
 W-12

THE OFFICIAL RECORD OF THIS SHEET IS THE ELECTRONIC FILE DIGITALLY SIGNED AND SEALED UNDER RULE 61G15-23.004, F.A.C.

MATCH LINE STA. 45+80.00

MATCH LINE STA. 51+40.00

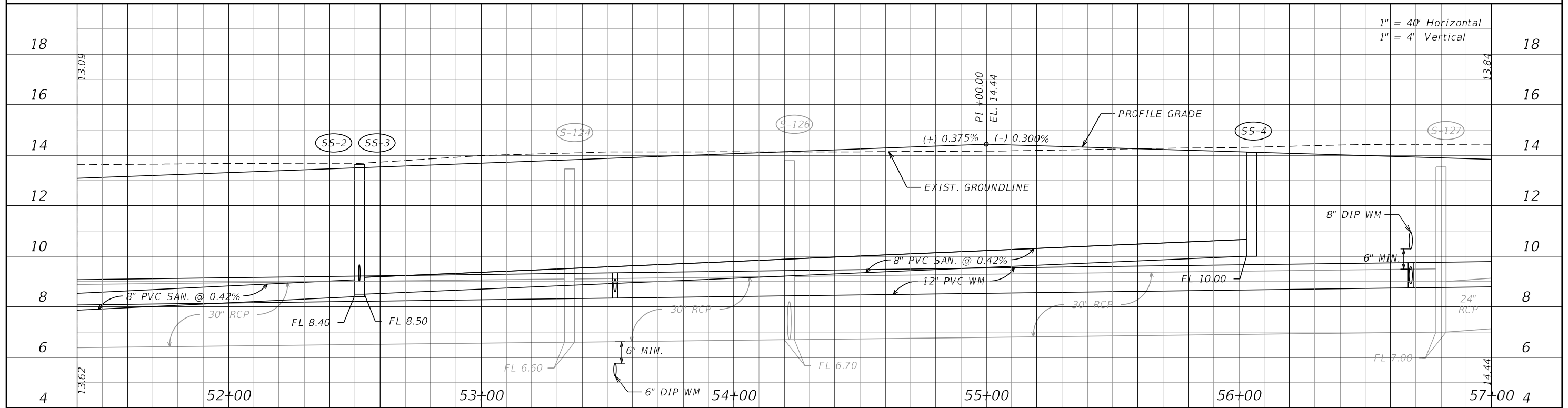
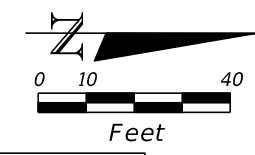
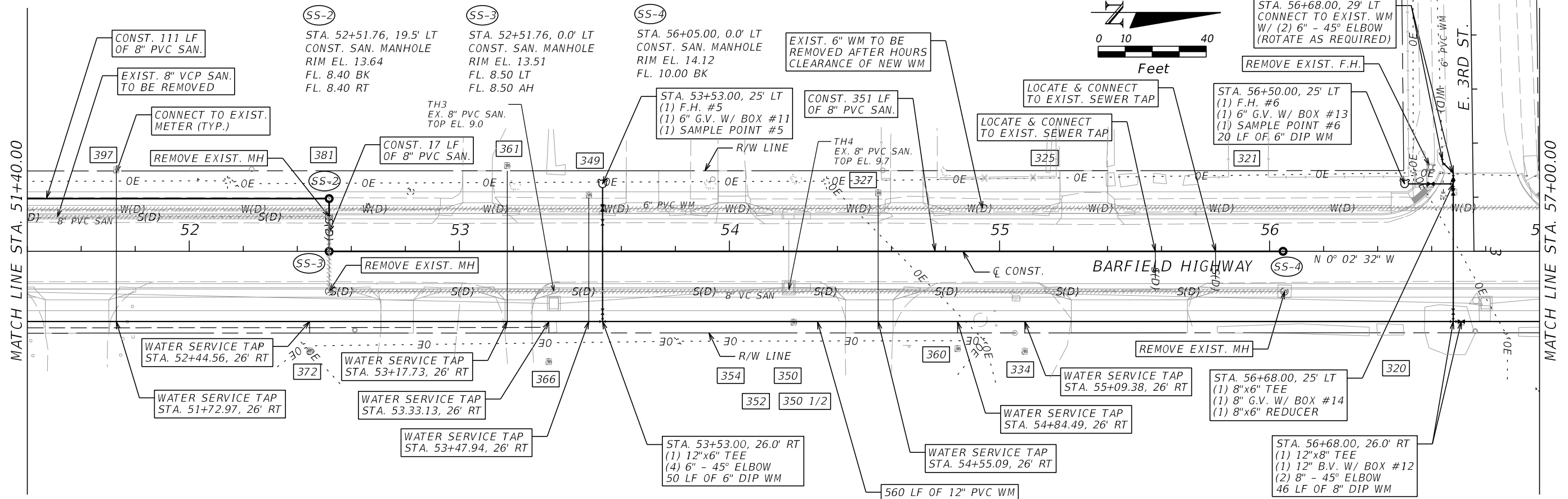


REVISIONS			
DATE	DESCRIPTION	DATE	DESCRIPTION

RODERICK MYRICK, P.E.
 P.E. LICENSE NUMBER 56969
 AE ENGINEERING, INC.
 219 N. NEWNAN STREET, 4TH FLOOR
 JACKSONVILLE, FL 32202
 CERTIFICATE OF AUTHORIZATION: 27212

CITY OF PAHOKEE		
ROAD NO.	COUNTY	FINANCIAL PROJECT ID
	PALM BEACH	442030-1-54-01

WATER MAIN REPLACEMENT PLAN - PROFILE		SHEET NO. W-13
--	--	-------------------



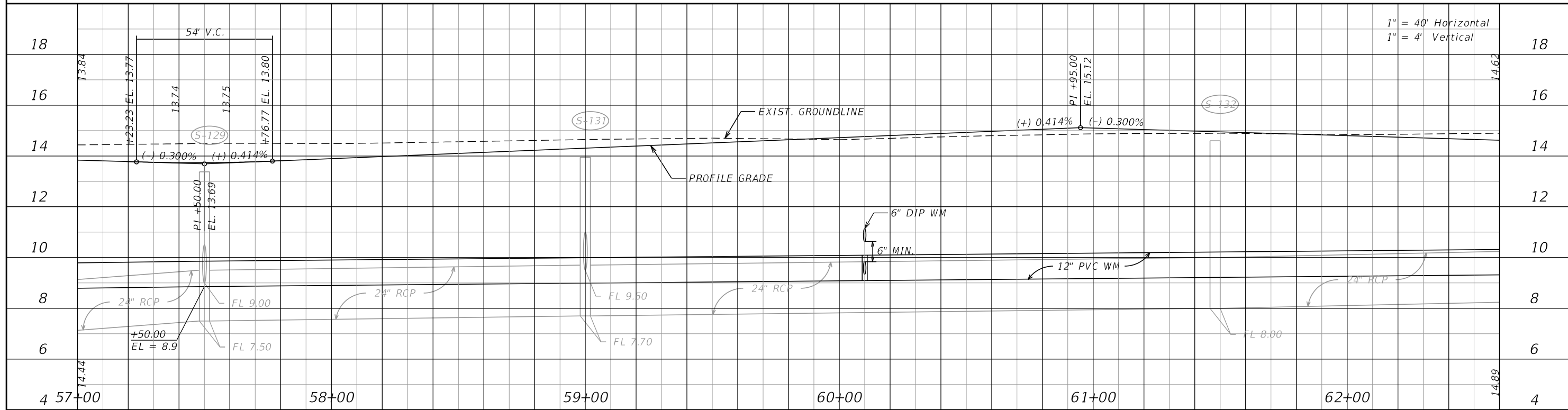
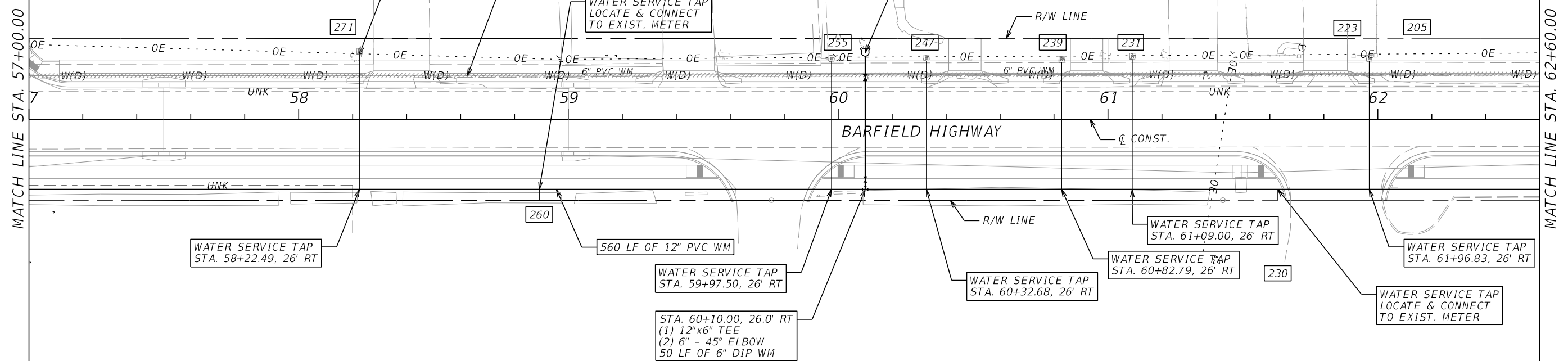
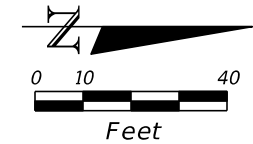
REVISIONS			
DATE	DESCRIPTION	DATE	DESCRIPTION

RODERICK MYRICK, P.E.
 P.E. LICENSE NUMBER 56969
 AE ENGINEERING, INC.
 219 N. NEWNAN STREET, 4TH FLOOR
 JACKSONVILLE, FL 32202
 CERTIFICATE OF AUTHORIZATION: 27212

CITY OF PAHOKEE		
ROAD NO.	COUNTY	FINANCIAL PROJECT ID
	PALM BEACH	442030-1-54-01

WATER MAIN REPLACEMENT PLAN - PROFILE	SHEET NO. W-14
--	-----------------------------

THE OFFICIAL RECORD OF THIS SHEET IS THE ELECTRONIC FILE DIGITALLY SIGNED AND SEALED UNDER RULE 61G15-23.004, F.A.C.



REVISIONS			
DATE	DESCRIPTION	DATE	DESCRIPTION

RODERICK MYRICK, P.E.
 P.E. LICENSE NUMBER 56969
 AE ENGINEERING, INC.
 219 N. NEWMAN STREET, 4TH FLOOR
 JACKSONVILLE, FL 32202
 CERTIFICATE OF AUTHORIZATION: 27212

CITY OF PAHOKEE		
ROAD NO.	COUNTY	FINANCIAL PROJECT ID
	PALM BEACH	442030-1-54-01

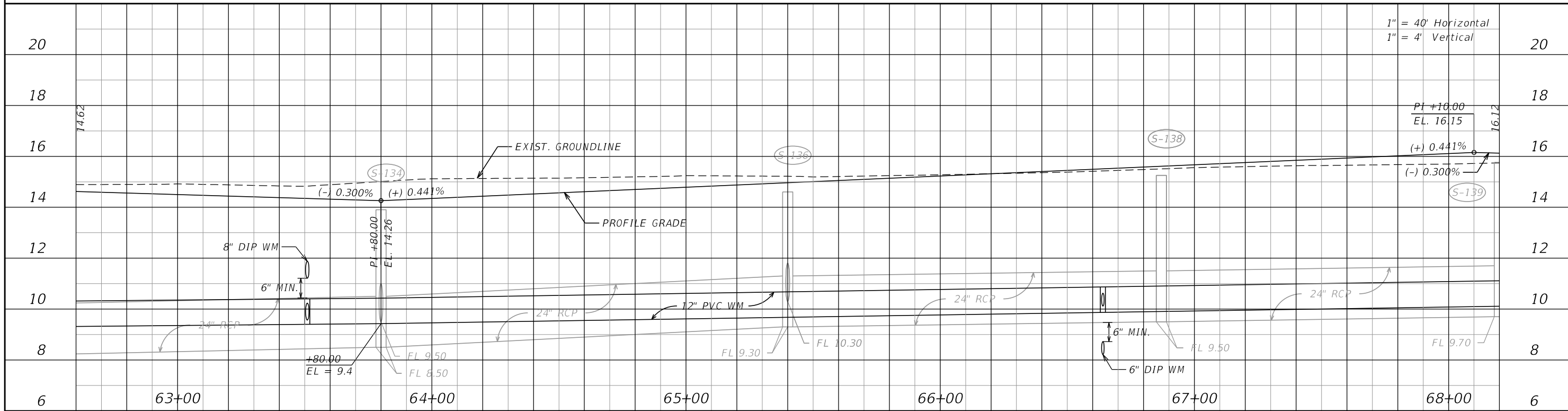
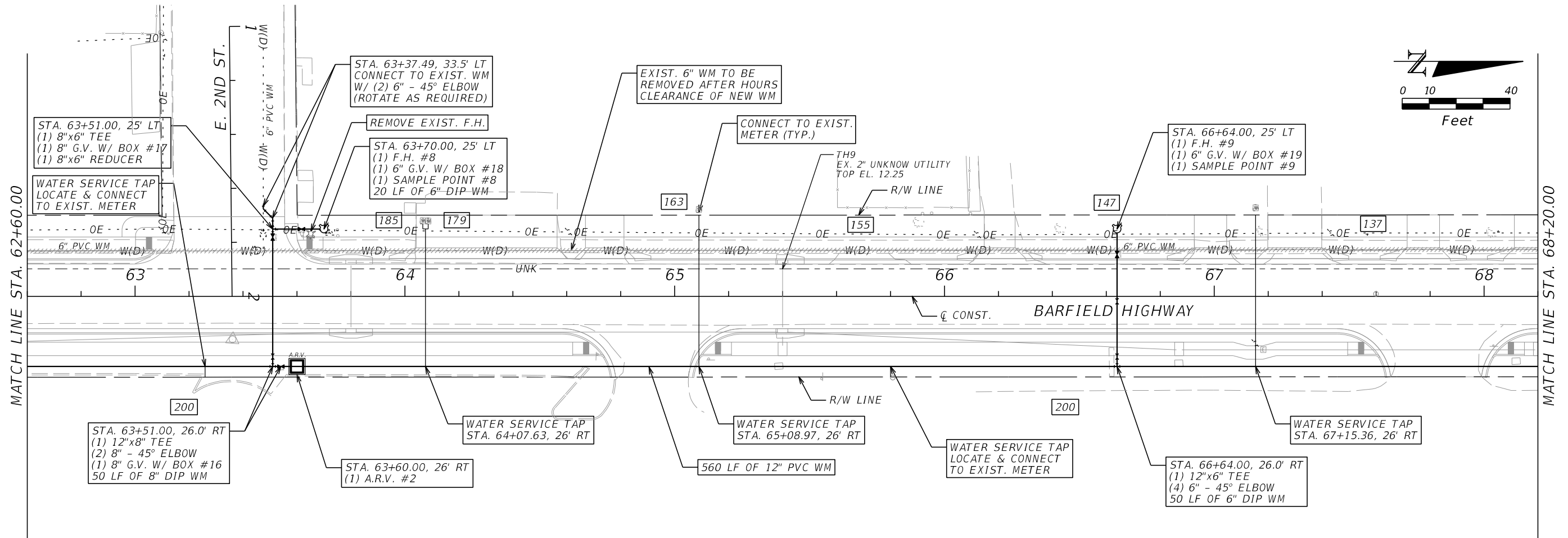
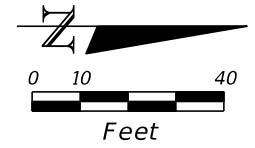
**WATER MAIN REPLACEMENT
 PLAN - PROFILE**

SHEET NO.
 W-15

THE OFFICIAL RECORD OF THIS SHEET IS THE ELECTRONIC FILE DIGITALLY SIGNED AND SEALED UNDER RULE 61G15-23.004, F.A.C.

MATCH LINE STA. 62+60.00

MATCH LINE STA. 68+20.00



REVISIONS			
DATE	DESCRIPTION	DATE	DESCRIPTION
1/4/89			

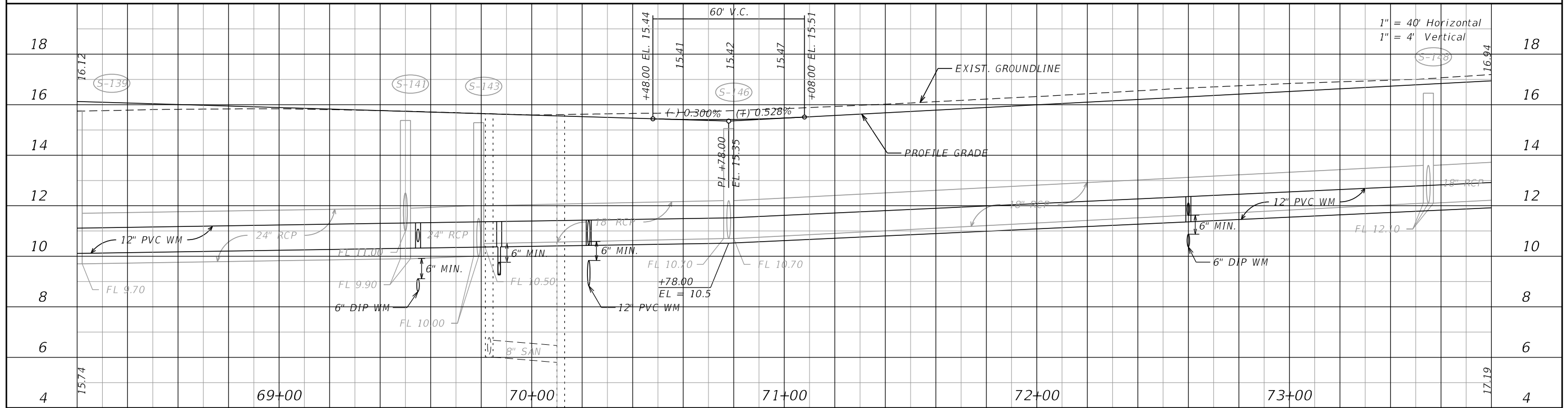
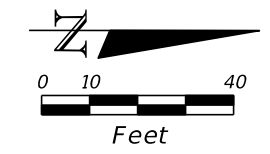
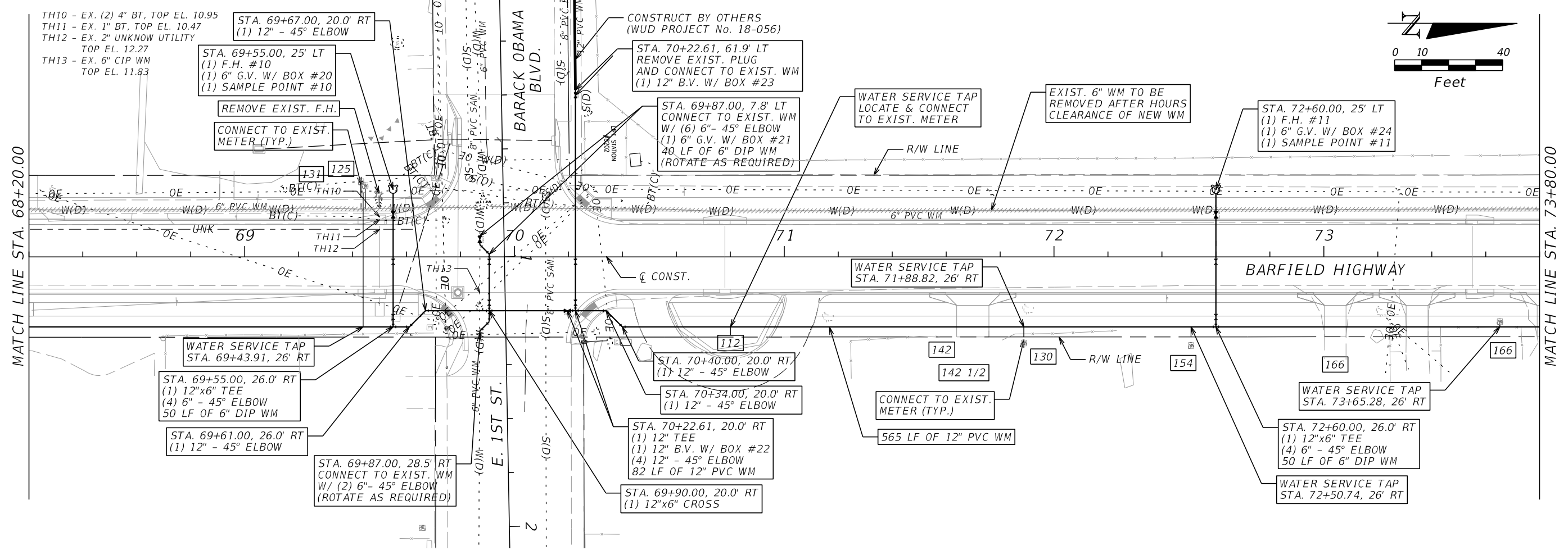
RODERICK MYRICK, P.E.
 P.E. LICENSE NUMBER 56969
 AE ENGINEERING, INC.
 219 N. NEWNAN STREET, 4TH FLOOR
 JACKSONVILLE, FL 32202
 CERTIFICATE OF AUTHORIZATION: 27212

CITY OF PAHOKEE		
ROAD NO.	COUNTY	FINANCIAL PROJECT ID
	PALM BEACH	442030-1-54-01

WATER MAIN REPLACEMENT
 PLAN - PROFILE

15.74 SHEET NO. W-16

THE OFFICIAL RECORD OF THIS SHEET IS THE ELECTRONIC FILE DIGITALLY SIGNED AND SEALED UNDER RULE 61G15-23.004, F.A.C.



REVISIONS			
DATE	DESCRIPTION	DATE	DESCRIPTION

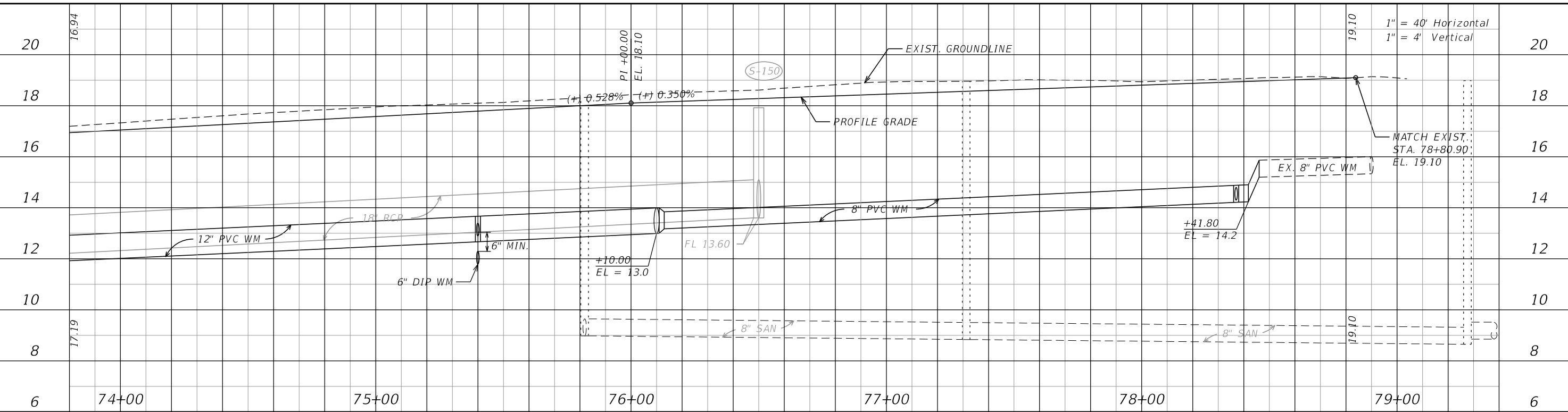
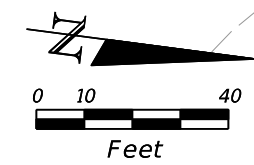
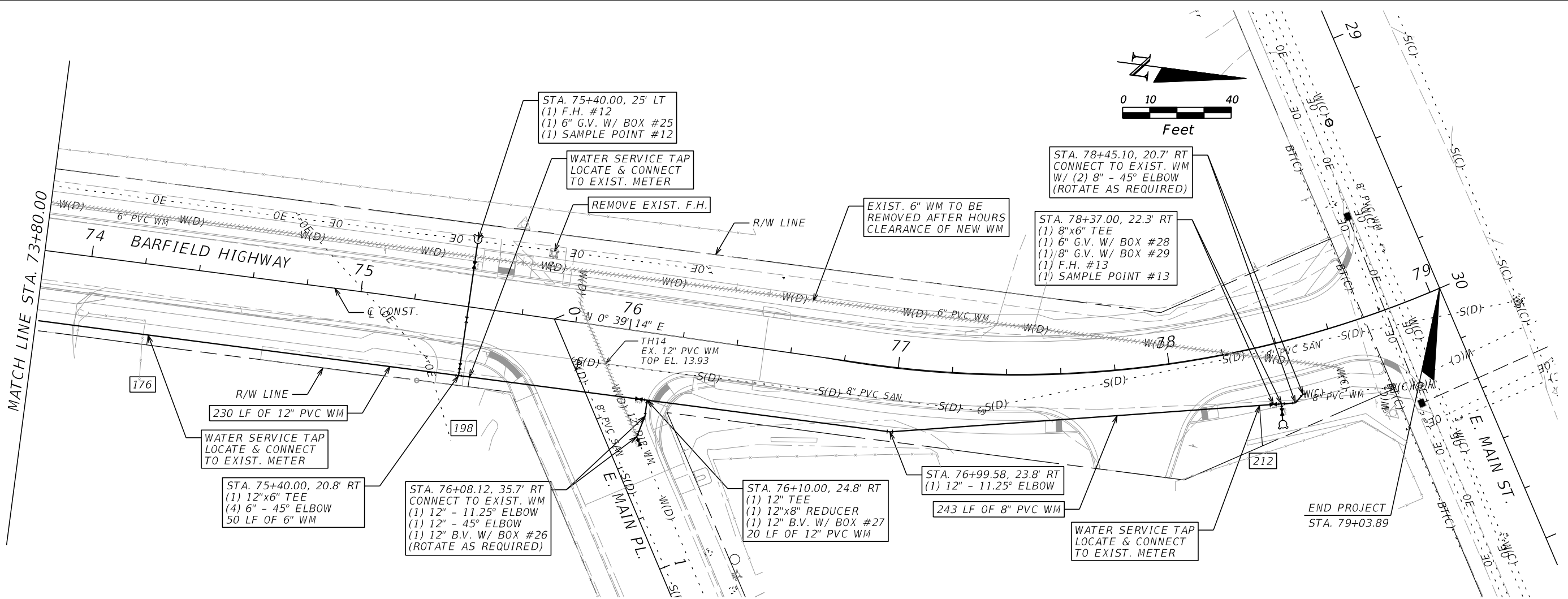
RODERICK MYRICK, P.E.
 P.E. LICENSE NUMBER 56969
 AE ENGINEERING, INC.
 219 N. NEWNAN STREET, 4TH FLOOR
 JACKSONVILLE, FL 32202
 CERTIFICATE OF AUTHORIZATION: 27212

CITY OF PAHOKEE		
ROAD NO.	COUNTY	FINANCIAL PROJECT ID
	PALM BEACH	442030-154-01

**WATER MAIN REPLACEMENT
 PLAN - PROFILE**

SHEET NO.
W-17

THE OFFICIAL RECORD OF THIS SHEET IS THE ELECTRONIC FILE DIGITALLY SIGNED AND SEALED UNDER RULE 61G15-23.004, F.A.C.



REVISIONS			
DATE	DESCRIPTION	DATE	DESCRIPTION

RODERICK MYRICK, P.E.
 P.E. LICENSE NUMBER 56969
 AE ENGINEERING, INC.
 219 N. NEWNAN STREET, 4TH FLOOR
 JACKSONVILLE, FL 32202
 CERTIFICATE OF AUTHORIZATION: 27212

CITY OF PAHOKEE		
ROAD NO.	COUNTY	FINANCIAL PROJECT ID
	PALM BEACH	442030-1-54-01

WATER MAIN REPLACEMENT
PLAN - PROFILE

SHEET NO.
W-18

THE OFFICIAL RECORD OF THIS SHEET IS THE ELECTRONIC FILE DIGITALLY SIGNED AND SEALED UNDER RULE 61G15-23.004, F.A.C.